



JMC Roller Bearings



J. MANGSUN & CO.

About Us



1970 - 1978

JMC entered into Roller Bearing Industry and quickly gained technical capability for manufacturing Heavy Duty Bearings.

With persistent work in R&D, **JMC** introduced tailor made Bearings for Water Pumps with integrated Shaft, spigot Bearing for Gear Box, high speed Spindle Bearings for tyre cord twisters and high temperature Bearings for Ceramic Industry.

JMC entered into manufacturing Roller Cage Bearings for high quality applications, having low carbon Steel end plates and stay bars. They were widely used in material handling equipments.

JMC brought out Industrial quality Bearings with Castellated Milled end rings and straight Rollers without steps in the end.

1979 - 1988

JMC gained reputation in Engineering Industry in General and Steel Plants in particular for manufacturing Roller Bearings.

1989

The need to manufacture **Flexible Roller Bearing and Spiral (Flexible) Bush Bearing** as an import substitution product aroused and was implemented immediately.

1990 - 1992

With the In-Built quality Circle and Continuous strive to break new grounds in the field of Non-standard Heavy Duty Bearings, **JMC** could design and develop their own equipments for checking Bearings.

1993

The Back-up Bearing was developed for **20HI Sendzmir Cold Rolling Mill**.

1995 - 1999

For the Bar and Wire Rod Mills **JMC** developed **Multi Row (4 Row) Cylindrical Roller Bearings**. These Bearings are used where space restriction in radial direction is very severe. The high speed Rolls must have the low rolling contact friction, type of Bearings.

JMC did succeed to develop the Cylindrical Roller Bearings cut into two halves (**Split Roller Bearings**). The application is mainly in the middle of Shafts where mounting and dismounting can be done without disturbing adjacent components.

For Steel Plants **JMC** developed **Taper Roller Bearing** for different Applications like CCS, Ingot Bogie, BBM, Merchant Mill etc.

2000 - 2001

The **Pressure Roller Units** used in Palletizing Machine in the continuous furnace of **Sintering plant** was developed and run successfully in High Temperature and Dusty environment.

2002 - 2005














- a) **JMC** has developed **Universal Joint Cross Bearings** and complete **Journal Cross Assembly** for Rolling Mills.
- b) **JMC** also has developed Pinion Shafts & **Planetary Gear Pins** for the Gear Transmissions. This product is a Deemed export, completely outsourced through us.

2006 - 2014

- a) **JMC** has developed **Multi Row Cylindrical Roller Bearings** for Work-Roll of Plate Mill and for BBM.
- b) **JMC** also has developed Ring/ Lock Nuts & **Hollow Shafts** for the Wind Gear Transmissions.

SPECIAL NOTES

- Equivalent International Bearing Numbers / Equivalent Numbers in this Catalogue suggest only the similarity in boundary dimensions.
- Bearing Weights given in this Catalogue are Approximate Weight of per Bearing.
- In the enquiries please add prefix 'JMC' and Suffix 'Bearing Type' to all Bearing numbers given in this catalogue.

INDEX	PAGE NO.
	ROLLER CAGE BEARINGS, WITHOUT INNER & OUTER RACE
	CYLINDRICAL ROLLER BEARINGS
	FLEXIBLE ROLLER BEARINGS
	SPIRAL (FLEXIBLE) BUSH BEARINGS for CCM
	SUPPORT ROLLERS Back-up Roll Bearings for 20-HI Sendzmir CRM
	CYLINDRICAL ROLLER BEARINGS
	CYLINDRICAL ROLLER BEARINGS - SINGLE ROW
	MULTI ROW CYLINDRICAL ROLLER BEARINGS - DOUBLE ROW
	MULTI ROW CYLINDRICAL ROLLER BEARINGS - FOUR ROW
	SPLIT ROLLER BEARINGS
	TAPER ROLLER BEARINGS
	PRESSURE ROLLER UNITS
	UNIVERSAL JOINT JOURNAL CROSS ASSEMBLIES & CROSS BEARINGS

ROLLER CAGE - BEARINGS WITHOUT INNER & OUTER RACE



JMC Roller Cage Bearing with no inner and outer races are unique in design and versatile in application.

The rollers running directly between the shaft and housing secure an appreciable saving in bearing size and weight. With the elimination of races the assembly is so simple that the roller cage slides between the shaft and housing easily, and runs firmly and freely. This phenomenon is achieved by the precision in the manufacture of Roller and their disposition in the cage.

The liberal length of the rollers, their quantity in each assembly and their disposition increase the capacity of the bearing to carry heavy load and withstand shocks and misuse.

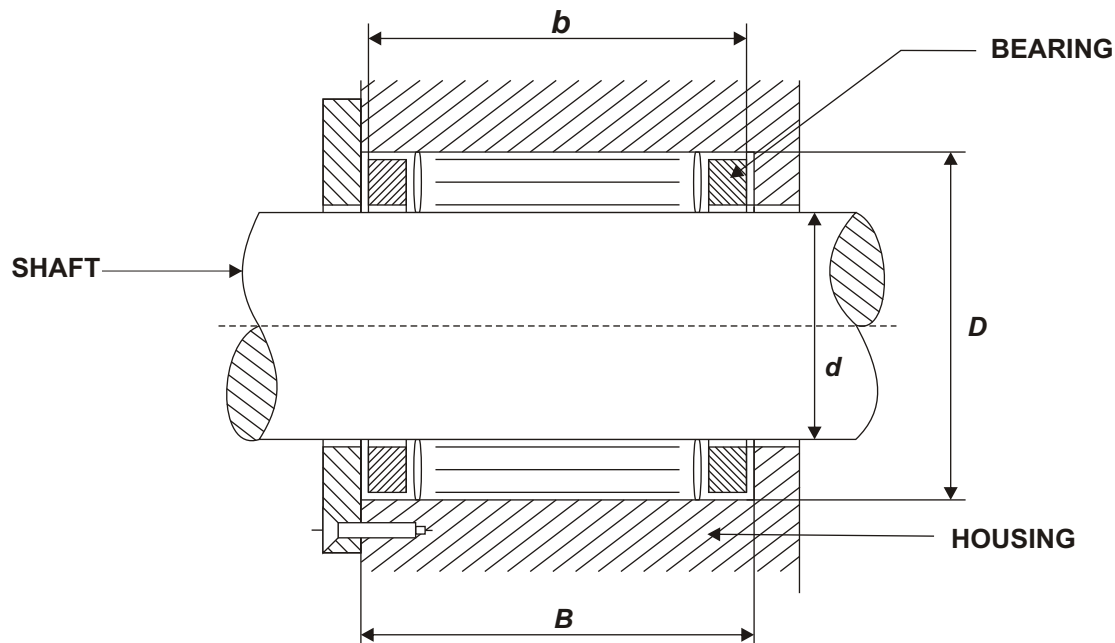
JMC Roller Cage Bearing guarantees minimum frictional resistance, easy mounting, heavy load and smooth running.

The rolling elements are machined out of special case hardening steel, heat - treated, to give a hard case, so as to withstand wear and tear, and a tough core to avoid breakage.

High accuracy and smooth finish obtained in centreless grinding operation ensures long trouble - free running.

The two end rings, made of medium carbon steel, located and held Parallel by a set of space bars form the cage. This plays a vital part in dispositioning the rollers for a smooth, silent, trouble - free continuous running. Unlike bush - bearing, ample space is left between the rolling elements for entry and supply of lubrication.

ROLLER CAGE - BEARINGS WITHOUT INNER & OUTER RACE



JMC. No.	SIZE (mm)			LOAD RATING IN TONS FOR 50 rpm	EQV. No. BALTZER
	d	D	b		
RCB-B-45/65/70	45	65	70	4.1	44520/70
RCB-B-55/75/40	55	75	40	5.1	65520/40
RCB-B-60/72/70	60	72	70	4.5	36012/70
RCB-B-70/100/195	70	100	195	16.80	47030/195
RCB-B-85/115/60	85	115	60	8.90	68530/60
RCB-B-90/130/90	90	130	90	11.5	59040/90
RCB-B-100/130/100	100	130	100	19.50	510030/100
RCB-B-110/130/100	110	130	100	18.50	511020/100
RCB-B-110/130/120	110	130	120	22.50	611020/120
RCB-B-120/140/70	120	140	70	14.20	612020/70
RCB-B-120/150/100	120	150	100	14.50	612030/100
RCB-B-130/150/100	130	150	100	14.50	613020/100
RCB-B-200/220/30/Split	200	220	30	16.00	420020/30 (D-B4)

- a) Rollers of above bearings are Hardened & Ground
- b) " b " is less than " B " by 0.1mm / 0.2mm

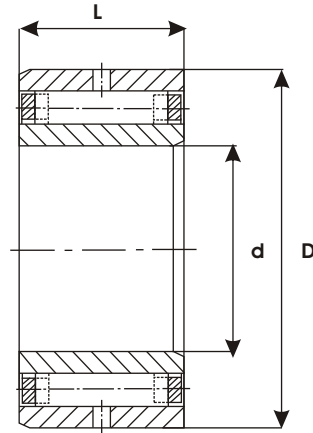
CYLINDRICAL ROLLER BEARINGS



JMC make Cylindrical Roller Bearings are similar to the flexible type with the exception that the roller are solid. The complete bearing comprises of Roller assembly with inner and outer races. The rollers have trunnions turned on each end and these engage in holes in the two end plates of the cage. Stay bars hold the end plates in position in the same manner as for flexible roller bearings : but in this case the bars are between the rollers and not through them as in the case of flexible Bearing Cage.

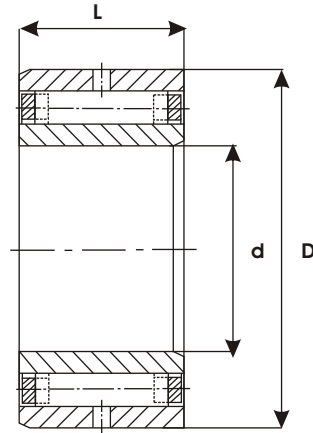
Cylindrical Roller Bearings are used where temperature in the surrounding area is less than 80°C. These bearings though can not take heavy shock load, can withstand heavy constant radial load.

CYLINDRICAL ROLLER BEARINGS WITH SOLID INNER AND OUTER RACE



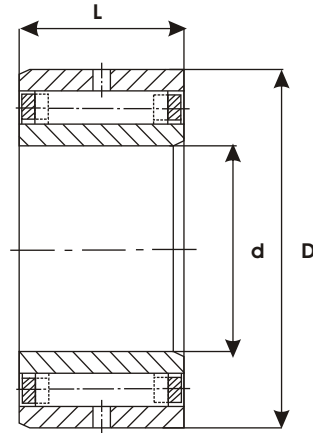
JMC No.	SIZE mm			BASIC LOAD RATING - C (IN TONS)		WT. Kg.	EQV. No.			
	d	D	L	Dyn. C	Static Co		HYATT	ROLLWAY	POLLARD	EICH
CRB-B-50/90/44	50	90	44.5	11.6	18.3	1.2	W 99210	D 210-28	FLWS 50	50 ZM3
CRB-B-50/90/88	50	90	88.9	23.2	36.7	2.4	D 99210	D 210-56	FLDS 50	50 ZM4
CRB-B-55/100/46	55	100	46.0	13.8	21.3	1.6	W 99211	D 211-29	FLWS 55	55 ZM3
CRB-B-55/100/92	55	100	92.1	27.6	42.6	3.2	D 99211	D 211-58	FLDS 55	55 ZM4
CRB-B-55/120/49	55	120	49.2	15.5	19.0	2.8	99311	D 311	FMS 55	55 ZM5
CRB-B-60/110/49	60	110	49.2	16.5	25.3	2.2	W 99212	D 212-31	FLWS 60	60 ZM3
CRB-B-60/130/54	60	130	54.0	21.0	27.2	3.7	M 99312	D 312		60 ZM6
CRB-B-65/120/38	65	120	38.1	12.7	18.5	2.0		D 213	FLS - 65	65 ZM1
CRB-B-65/120/52	65	120	52.4	18.4	29.8	2.8	W 99213	D 213-33	FLWS - 65	65 ZM2
CRB-B-65/140/58	65	140	58.7	21.4	26.9	4.5	M 99313	D 313		65 ZM5
CRB-B-70/125/41	70	125	41.3	14.1	21.4	2.3	99214	D 214 - 26	FLS 70	70 ZM2
CRB-B-70/125/120	70	125	120.7	41.9	71.2	6.5	D 99214	D 214 - 76	FDLS 70	70 ZM4
CRB-B-75/130/44	75	130	44.5	16.7	27.1	2.6	99215	D 215 - 28	FLS 75	75 ZM2
CRB-B-75/130/66	75	130	66.7	25.2	45.9	3.8	W99215	D 215-42	FLWS 75	75 ZM3
CRB-B-80/140/66	80	140	66.7	25.8	44.7	4.5	W99216	D 216-42	FLWS 80	80 ZM3
CRB-B-80/170/65	80	170	65.1	31.8	41.7	7.6	316		FMS 80	80 ZM6

CYLINDRICAL ROLLER BEARINGS WITH SOLID INNER AND OUTER RACE



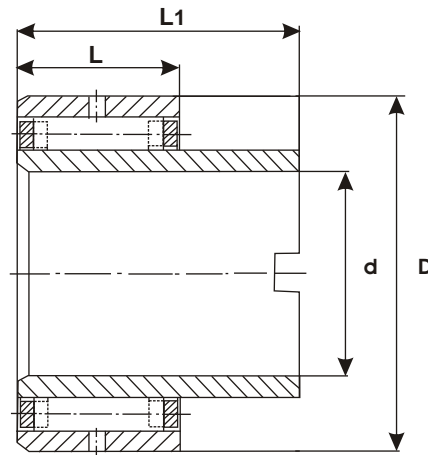
JMC No.	SIZE mm			BASIC LOAD RATING - C (IN TONS)		WT. Kg.	EQV. No.			
	d	D	L	Dyn. C	Static Co		HYATT	ROLLWAY	POLLARD	EICH
CRB-B-85/150/49	85	150	49.2	20.4	31.4	3.9	99217	D 217	FLS 85	85 ZM1
CRB-B-85/150/69	85	150	69.9	29.6	50.6	5.3	W 99217	D 217-44	FLWS 85	85 ZM2
CRB-B-85/180/69	85	180	69.9	34.9	47.4	9.1	317	D 317-44	FMS 85	85 ZM4
CRB-B-85/180/73	85	180	73	36.8	50.8	9.4	M 99317	D 317		85 ZM5
CRB-B-90/160/71	90	160	71.4	34.5	53.1	6.2		D 218-45	FLWS 90	90 ZM2
CRB-B-90/190/76	90	190	76.2	40.4	55.9	11.0	M 99318	D 318 - 48	FMS 90	90 ZM4
CRB-B-95/170/55	95	170	55.6	26.7	40.7	5.7		D 219	FLS 95	95 ZM1
CRB-B-95/170/76	95	170	76.2	38.2	64.4	7.8		D 219-48	FLWS 95	95 ZM2
CRB-B-100/180/58	100	180	58.7	28.2	44.3	6.9	99220	D 220-37	FLS 100	100 ZM1
CRB-B-100/180/82	100	180	82.55	40.9	71.4	9.5	W 99220	D 220-52	FLWS 100	100 ZM3
CRB-B-110/200/65	110	200	65.1	34.0	52.2	9.4	99222	D 222-41	FLS 110	110 ZM1
CRB-B-110/200/89	110	200	88.9	48.1	81.7	12.5	W 99222	D 222-56	FLWS 110	110 ZM3
CRB-B-110/240/95	110	240	95.3	62.8	88.6	21.9	322	D 322-60	FMS 110	110 ZM6
CRB-B-120/215/98	120	215	98.4	56.5	97.8	15.8	W 99224	D 224-62	FLWS 120	120 ZM3
CRB-B-120/215/196	120	215	196.9	113	195.6	31.6	D 99224	D224-124	FLDS 120	120 ZM5
CRB-B-120/260/104	120	260	104.8	70.6	104.6	29.1	99324	D 324	FMS 120	120 ZM6

CYLINDRICAL ROLLER BEARINGS WITH SOLID INNER AND OUTER RACE



JMC No.	SIZE (mm)			BASIC LOAD RATING - C (IN TONS)		WT. Kg.	EQV. No.			
	d	D	L	Dyn. C	Static Co		HYATT	ROLLWAY	POLLARD	EICH
CRB-B-130/230/79	130	230	79.4	46.8	78.3	14.6	99226	D 226	FLS 130	130 ZM1
CRB-B-130/230/108	130	230	108.0	64.7	118.7	19.8	W 99226	D 226-68	FLWS 130	130 ZM2
CRB-B-130/230/215	130	230	215.9	129.5	237.4	39.6	D 99226	D226-136	FLDS 130	130 ZM4
CRB-B-140/250/120	140	250	120.7	80.7	149.0	26.4	W 99228	D 228-76	FLWS 140	140 ZM2
CRB-B-140/250/241	140	250	241.3	161.4	298.0	52.7	D 99228	D228-152	FLDS-140	140 ZM3
CRB-B-150/270/120	150	270	120.7	89.2	160.7	31.3	W 99230	D 230-76	FLWS-150	150 ZM2
CRB-B-160/290/123	160	290	123.8	95.8	173.7	37.4	W 99232	D 232-78	FLWS-160	160 ZM2
CRB-B-160/290/247	160	290	247.7	191.6	347.5	74.9	D 99232	D-232-156	FLDS-160	160 ZM3
CRB-B-170/310/136	170	310	136.5	115.2	210.4	47.5	W 99234	D 234-86	FLWS 170	170 ZM2
CRB-B-170/310/273	170	310	273.1	230.4	420.8	94.9	D 99234	D 234-172	FLDS 170	170 ZM4
CRB-B-180/320/149	180	320	149.2	124.9	236.2	53.3	W 99236	D 236-94	FLWS 180	180 ZM
CRB-B-200/340/120	200	340	120.7	108.4	202.0	47.4	S 99240	SD 240	FLS 200	200 ZM1
CRB-B-200/340/174	200	340	174.6	158	328.1	67.5	S W 99240	SD 240-110	FLWS 200	200 ZM2
CRB-B-220/380/174	220	380	174.6	169.8	372.2	88.1	S W 99244	SD 244-110	FLWS 220	220 ZM1
CRB-B-240/360/114	240	360	114.3	109	235	42.6	S 99148	D 148-72		240 ZM1
CRB-B-280/420/127	280	420	127	138	300	64.8	S 99156	SD 156		280 ZM

CYLINDRICAL ROLLER BEARINGS WITH INNER (EXTENDED) & OUTER RACE



JMC No.	SIZE (mm)				BASIC LOAD RATING (IN TONS)		WT. Kg.	EQV. No.		
	d	D	L	L1	Dyn. C	Static Co		ROLLWAY	HYATT	EICH
CRBE-B-76/130/66/85	76.2	130	66.7	85.7	25	44.5	4	TW 215	TW 99215	76 ZN1
CRBE-B-100/180/82/92	100	180	82.6	92.1	40	71	9.8	TXW 220	TXW 99220	100 ZN3
CRBE-B-101/180/58/111	101.6	180	58.7	111.1	28	44	8.1	T 220	T 99220	101 ZN1
CRBE-B-101/180/82/111	101.6	180	82.6	111.1	40	71	10.1	TW 220	TW 99220	101 ZN2
CRBE-B-112/200/88/98	112.7	200	88.9	98.4	48	81	12.5	TXW 222	TXW 99222	112 ZN2
CRBE-B-114/200/88/111	114.33	200	88.9	111.1	48	81	12.6	TW 222		114 ZN4
CRBE-B-125/230/79/117	125.41	230	79.4	117.5	46.5	78	17.1	T 226	T 99226	125 ZN1
CRBE-B-125/230/108/117	125.41	230	108	117.5	64.5	118	21.1	TXW 226	TXW 99226	125 ZN2
CRBE-B-130/230/108/142	130	230	108	142.9	65	119	21.3	--	TYW 99226	130 ZN
CRBE-B-138/250/82/130	138.11	250	82.6	130.2	53.5	88.6	21.4	T 228	T 99228	138 ZN1
CRBE-B-138/250/120/130	138.11	250	120.7	130.2	80	149	27.3	TXW 228	TXW 99228	138 ZN2
CRBE-B-150/270/88/136	150.81	270	88.9	136.5	63.5	104	27	T 230	T 99230	150 ZN1
CRBE-B-150/270/120/136	150.81	270	120.7	136.5	89	160	32	TW 230	TW 99230	150 ZN2
CRBE-B-163/290/123/139	163.51	290	123.8	139.7	95	172	37.6	TW 232	TW 99232	163 ZN2
CRBE-B-176/320/149/165	176.21	320	149.2	165.1	124	235	56	TW 236	TW 99236	176 ZN1
CRBE-B-190/340/174/190	190.5	340	174.6	190.5	157	325	73.3	TSW 240	TSW 99240	190 ZN2

FLEXIBLE ROLLER BEARINGS



Bearings with Flexible Rollers are ideal to withstand shock loads like Hot Rolling Mills, Pigcast conveyers, continuous casting Rolls & Dusty atmosphere like coal crushers and Roller hearth furnace.

JMC Flexible Roller Bearings are made of series of helically wound rollers which are assembled alternately right hand and left hand in a hardened steel retaining cage. This cage accurately aligns & spaces the roller and consists of two retaining rings which are held in a parallel & concentric position by stay-bars. These stay bars are shouldered at each end and riveted with a domed head. The retaining rings are counter bored to a suitable depth to ensure that the rivet heads do not project beyond the face of the ring.

The Rollers which are the most important part of the Bearing are made from billets of spring steel. When in strip form they are helically wound with right or left hand spirals and then accurately cut off to length. They are then chamfered, heat-treated and ground to very accurate sizes.

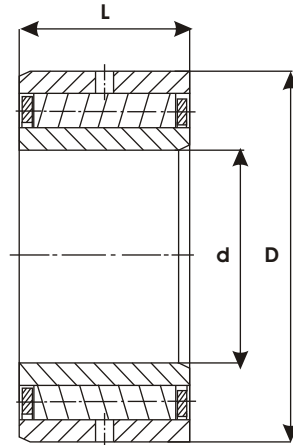
The inner and outer races are steel cylinders of chrome steel hardened and ground to precision limits and high finish.

The complete bearing thus made up of three separate units. The fact that the inner race can be mounted on the shaft and the outer race fitted in the housing separately while the roller assembly can be inserted when the components parts of the machine are brought together at a later stage is a feature which is appreciated by engineers as it very often makes possible considerable economy in production.

Flexible Roller Bearings are used where there is a heavy shock load & the surrounding temperature is more than 80°C

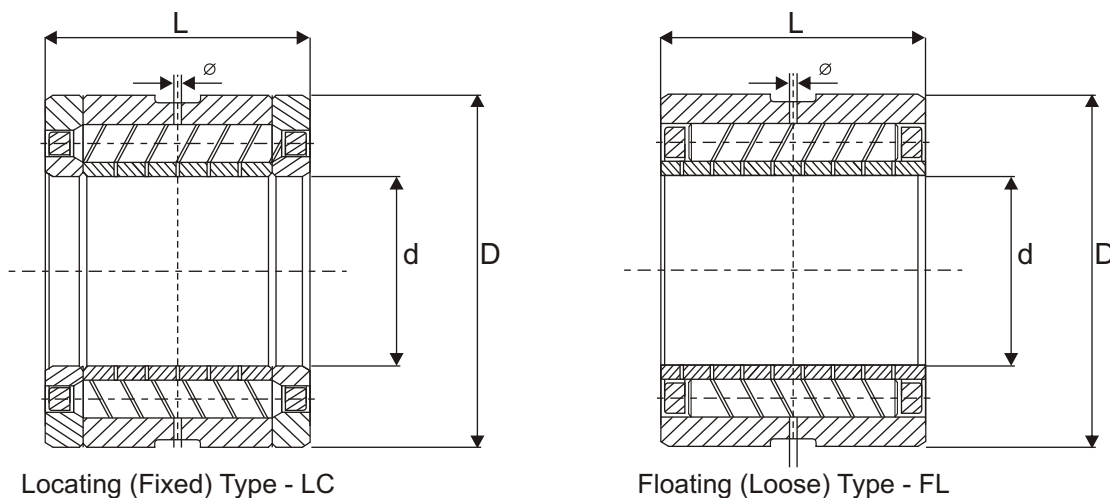
Flexible Roller Bearings with flexible inner and outer races are also used where there is space restriction. These flexible races involves very less thickness and cross section but at the same time can take up heavy load. Such bearings are very popular in Hot Rolling Mills.

FLEXIBLE ROLLER BEARINGS WITH SOLID INNER AND SOLID OUTER RACE



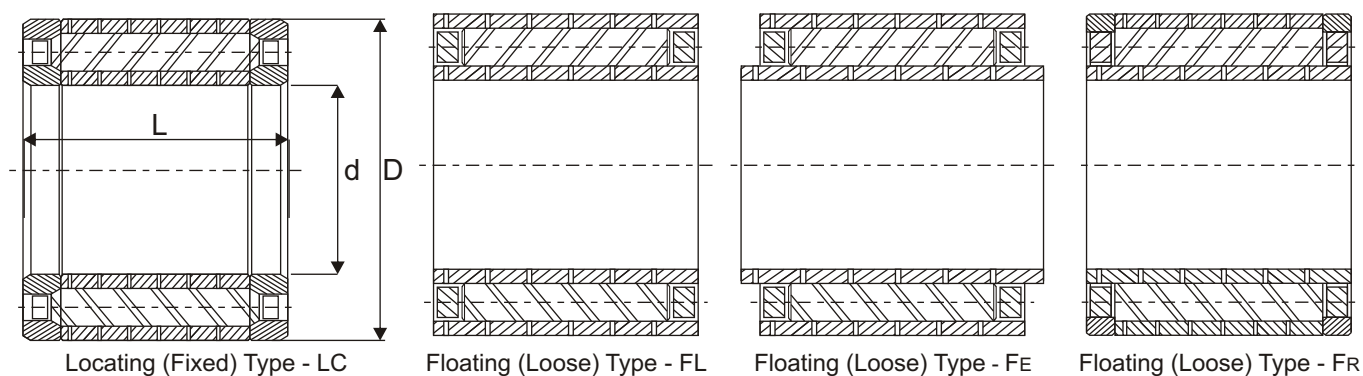
JMC No.	SIZE (mm)			BASIC LOAD RATING (IN TONS)		WT. Kg.	EQV. No.			
	d	D	L	Dyn. C	Static Co		POLLARD	HYATT	EICH	GPZ (USSR)
FRB-B-35/78/45	35	78	45	1.9	4.9	0.9	—	—	—	
FRB-B-40/80/34	40	80	34.9	1.9	4.9	0.9	FLW 40	W 208	40 F2	
FRB-B-45/85/39	45	85	39.7	2.5	6.4	1.2	FLW 45	W 209	45 F2	
FRB-B-50/90/44	50	90	44.5	3.0	7.5	1.3	FLW 50	W 210	50 F2	5210K
FRB-B-55/100/46	55	100	46	3.6	9.2	1.8	FLW 55	W 211	55 F2	
FRB-B-60/110/49	60	110	49.2	4.2	10.6	2.2	FLW 60	W 212	60 F2	5212
FRB-B-65/120/38	65	120	38.1	4.5	11.3	2.2	FL 65	213	65 F1	
FRB-B-65/120/52	65	120	52.4	4.8	12.0	3.0	FLW 65	W 213	65 F2	
FRB-B-70/125/60	70	125	60.3	6.1	15.3	3.6	FLW 70	W 214	70 F2	
FRB-B-75/130/66	75	130	66.7	7.2	18.3	4.1	FLW 75	W 215	75 F2	5215
FRB-B-80/140/66	80	140	66.7	7.6	19.2	4.9	FLW 80	W 216	80 F2	5216
FRB-B-85/150/69	85	150	69.9	8.3	21.0	5.8	FLW 85	W 217	85 F2	5217
FRB-B-90/160/71	90	160	71.4	8.9	22.4	6.9	FLW 90	W 218	90 F2	5218
FRB-B-95/170/76	95	170	76.2	9.8	24.6	8.2	FLW 95	W 219	95 F2	
FRB-B-100/180/82	100	180	82.6	11.3	28.4	10.0	FLW 100	W 220	100 F2	5220
FRB-B-110/200/88	110	200	88.9	14.1	35.4	13.6	FLW 110	W 222	110 F2	5222
FRB-B-120/215/98	120	215	98.4	16.8	42.3	17.2	FLW 120	W 224	120 F2	5224
FRB-B-130/230/108	130	230	108	18.8	47.3	21.7	FLW 130	W 226	130 F4	5826K
FRB-B-140/250/120	140	250	120.7	23.7	59.5	28.1	FLW 140	W 228	140 F3	5228
FRB-B-150/270/120	150	270	120.7	24.8	62.1	32.9	FLW 150	W 230	150 F2	5230
FRB-B-160/290/123	160	290	123.8	28.2	70.7	39.8	FLW 160	W 232	160 F2	5232
FRB-B-170/310/136	170	310	136.5	32.5	81.4	50.0	FLW 170	W 234	170 F1	
FRB-B-180/320/149	180	320	149.2	37.8	94.9	56.9	FLW 180	W 236	180 F	5236
FRB-B-200/340/174	200	340	174.6	49.8	124.9	72.0	FLW 200	SW 240 ASW 240 H	200 F2	5740
FRB-B-220/380/174	220	380	174.6	54.1	136.2	92.4	FLW 220	SW 244	220 F1	5744
FRB-B-240/360/114	240	360	114.3	33.6	85.0	44.9		S 148	240 F	5748
FRB-B-280/420/127	280	420	127	44.5	111.5	68.8		S 156	280 F	5756

FLEXIBLE ROLLER BEARINGS WITH FLEXIBLE INNER AND SOLID OUTER RACE



JMC BEARING No.	TYPE	SIZE (mm)			EQV. TYPE (EICH GERMANY)
		d	D	L	
FRBI-B-160 / 290 / 160	LC or FL	160	290	160	Fixed Type "U" OR Loose Type "BMA"
FRBI-B-240 / 400 / 220	LC or FL	240	400	220	Fixed Type "U" OR Loose Type "BMA"
FRBI-B-250 / 400 / 200	LC or FL	250	400	200	Fixed Type "U" OR Loose Type "BMA"
FRBI-B-250 / 400 / 220	LC or FL	250	400	220	Fixed Type "U" OR Loose Type "BMA"

FLEXIBLE ROLLER BEARINGS WITH FLEXIBLE INNER & FLEXIBLE OUTER RACE



JMC BEARING No.	TYPE	SIZE (mm)			EQV. TYPE (EICH GERMANY)
		d	D	L	
FRBA-B-90 / 164 / 130	LC or FL	90	164	130	Fixed Type "U" OR Loose Type "B"
FRBA-B-140 / 260 / 170	LC or FL	140	260	170	Fixed Type "U" OR Loose Type "B"
FRBA-B-180/300/150/170	FE	180	300	150/170	Fixed Type "U" OR Loose Type "B"
FRBA-B-280 / 400 / 150	LC or FR	280	400	150	Fixed Type "U" OR Loose Type "B"
FRBA-B-300 / 430 / 200	LC or FL	300	430	200	Fixed Type "U" OR Loose Type "B"
FRBA-B-300 / 430 / 250	LC or FL	300	430	250	Fixed Type "U" OR Loose Type "B"
FRBA-B-330 / 450 / 250	LC or FL	330	450	250	Fixed Type "U" OR Loose Type "B"

While placing order, mention required type of Bearing.

SPIRAL (FLEXIBLE) BUSH BEARINGS



JMC Spiral (Flexible) Bush Bearings are made out of high quality spring steel, which withstands for high temperature environment.

These Bearings are mainly used in,
CONTINUOUS CASTING MACHINES :

MOULD : Back Up Plate Assembly and Foot Roll Scaffold Assembly.

SEGMENT '0' : Rolls.

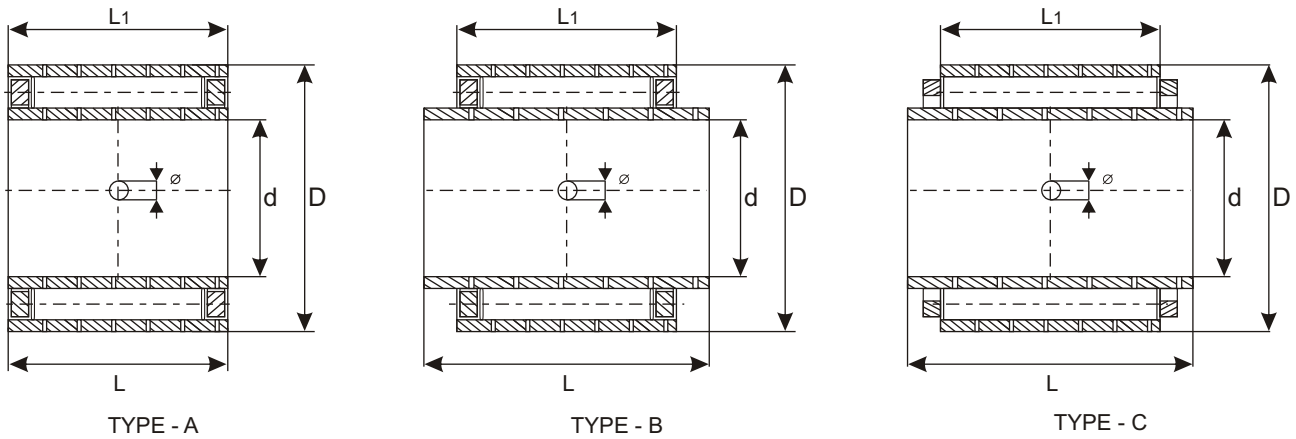
These bearings are also being used in Roller Hearth Furnaces.

Advantages of JMC Spiral (Flexible) Bush Bearings :

- Easy for mounting
- Suitable for dusty environment
- Withstand high temperature
- Space restrictions force us to use thin walled bearings.
JMC Spiral (Flexible) Bush Bearings are very much suitable for such applications.
- Thin walled Spiral (Flexible) Bushes allows more space for rolling elements with maximum diameter. This will press particles into the coil gap of the Spiral Bushings, while rolling over dust and foreign particles. This results in the smooth running of the bearing rollers.

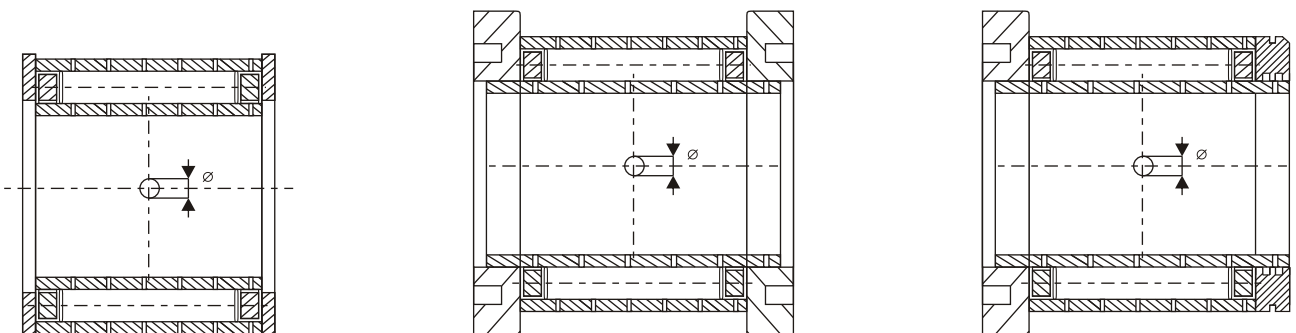
JMC Spiral (Flexible) Bush Bearings can be supplied with various combinations of side rings and labyrinth rings as per the customers demand.

SPIRAL (FLEXIBLE) BUSH BEARINGS



JMC BEARING No.	SIZE (mm)				EQV. TO EICH	LOAD RATING (in KN)	
	d	D	L	L1		Dyn. C	Stat. Co.
SBB-B - 25 / 70 - 60 / 40	25	70	60	40	BR 25/70 - 60 / 40	60	175
SBB-B - 40 / 68 - 58 / 45	40	68	58	45	BR 40/68 - 58 / 45	75	200
SBB-B - 40 / 78 - 57 / 45	40	78	57	45	BR 40/78 - 57 / 45	120	220
SBB-B - 40 / 71 - 32 / 32	40	71	32	32	BR 40/71 - 32 / 32	75	210
SBB-B - 40 / 82 - 80 / 62	40	82	80	62	BR 40/82 - 80 / 62	160	255
SBB-B - 45 / 80 - 70 / 70	45	80	70	70	BR 45/80 x 70 / 70	150	250
SBB-B - 45 / 80 - 73 / 63	45	80	73	63	BR 45/80 x 73 / 63	160	265
SBB-B - 50 / 85 - 70 / 70	50	85	70	70	BR 50/85 - 70 / 70	170	270
SBB-B - 50 / 85 - 80 / 70	50	85	80	70	BR 50/85 - 80 / 70	170	270
SBB-B - 50 / 90 - 60 / 50	50	90	60	50	BR 50/90 - 60 / 50	195	285
SBB-B - 50 / 95 - 50 / 50	50	95	50	50	BR 50/95 - 50 / 50	195	285
SBB-B - 50 / 95 - 65 / 50	50	95	65	50	BR 50/95 - 65 / 50	190	280
SBB-B - 50 / 95 - 85 / 85	50	95	85	85	BR 50/95 - 85 / 85	200	295
SBB-B - 50 / 95 - 95 / 70	50	95	95	70	BR 50/95 - 95 / 70	210	300
SBB-B - 55 / 90 - 73 / 63	55	90	73	63	BR 55/90 - 73 / 63	135	210
SBB-B - 55 / 90 - 90 / 72	55	90	90	72	BR 55/90 - 90 / 72	145	225
SBB-B - 55 / 95 - 73 / 63	55	95	73	63	BR 55/95 - 73 / 63	132	210
SBB-B - 55 / 100 - 65 / 55	55	100	65	55	BR 55/100 - 65 / 55	145	225
SBB-B - 60 / 89 - 73 / 63	60	89	73	63	BR 60/89 - 73 / 63	175	330
SBB-B - 60 / 90 - 65 / 55	60	90	65	55	BR 60/90 - 65 / 55	185	340
SBB-B - 60 / 95 - 73 / 63	60	95	73	63	BR 60/95 - 73 / 63	190	350
SBB-B - 60 / 100 - 67 / 62	60	100	67	62	BR 60/100 - 67 / 62	190	350
SBB-B - 60 / 105 - 73 / 63	60	105	73	63	BR 60/105 - 73 / 63	200	330
SBB-B - 60 / 110 - 105 / 80	60	110	105	80	BR 60/110 - 105 / 80	220	350
SBB-B - 60 / 110 - 105 / 94	60	110	105	94	BR 60/110 - 105 / 94	210	340
SBB-B - 65 / 110 - 73 / 63	65	110	73	63	BR 65/110 - 73 / 63	175	330
SBB-B - 70 / 99 - 73 / 63	70	99	73	63	BR 70/99 - 73 / 63	180	335
SBB-B - 80 / 120 - 73 / 63	80	120	73	63	BR 80/120 - 73 / 63	230	420
SBB-B - 80 / 125 - 70 / 65	80	125	70	65	BR 80/125 - 70 / 65	290	480
SBB-B - 90 / 130 - 73 / 73	90	130	73	73	BR 90/130 - 73 / 73	305	490

Bearings can be supplied with Side Ring, Labyrinth Ring combinations as per customer requirement, like (e.g.)



SUPPORT ROLLERS (Back-up Roll Bearings for 20 HI Sendzmir CRM)



Back-Up Roller Bearings are sorted into altogether 5 section height group and marked accordingly.

Group 0 is the smallest & group 4 the largest section height group.

The key numbers 0 to 4 express the exact cross section of the Bearings.

For e.g.

Over	Including	Section
Ø 300.005	Ø 300.007	0
Ø 300.007	Ø 300.009	1
Ø 300.009	Ø 300.011	2
Ø 300.011	Ø 300.013	3
Ø 300.013	Ø 300.015	4

As can be seen from this table, each of the 5 section height group has a tolerance of 0.002 mm.

This means that the pairing by sets of 7 Back-up Bearings, on one arbor, even when using partial sets of adjacent section height group can still be carried out within a tolerance of 0.002 mm.

The very reduced section height tolerance of the bearings can only be achieved by measuring the bearing rings and assembling them with a specific roller grade.

Great care must be taken to keep the parts of a bearing together & not to interchange them with parts of another bearing.

In practice, bearings of the same size are generally mounted with a transition fit on the arbor. They then form a height line parallel with the axis.

When rolling strip, that is narrower than the max. width capacity of the mill stand, the bearings in the middle are subjected to higher loads than those positioned at either end of the arbor.

As the center bearings are thus undergoing greater wear than the bearings at the ends, it is recommended to regularly change the positions of the bearings on their arbor to ensure a longer service life of the component parts.

It is, therefore, important to establish and maintain up-to-date records in this respect.

SUPPORT ROLLERS (Back-up Roll Bearings for 20 HI Sendzmir CRM)



The seating positions of the various Back-up bearings on the arbor or in the mill stand, their respective service times and when the changes were carried out are all recorded systematically so as to avoid adverse effect of the inner ring wall thickness variation. Place the ring on the arbor in such a way that the arrows marked, on the inner ring faces, to indicate the largest wall thickness, are in line.

The inner rings subjected to stationary load should be rotated to another loaded zone each time the arbor is dismantled for inspection.

The arrows which indicate the largest wall thickness variation can be used as an aid when rotating & lining up the inner rings in a new loaded zone.

The outside diameter of the Back-up Bearings must be reground from time to time to remove any indentations and flats generated during operation.

For regrinding, we recommend a grinding arbor capable of carrying 3 outer rings.

When dismantling the bearings, care must be taken not to mix up the roller sets and inner rings of one bearing with the parts of another bearing.

The various bearings are numbered consecutively.

At the time of entry into service, fix the intervals at which the loaded zone of the inner rings should be changed.

As the loaded zone of the inner ring is limited to a small part of the circumference, regular rotation will ensure uniform wear of the inner ring and will definitely prolong the services life of the bearing.

While placing order, Please add following suffixes :

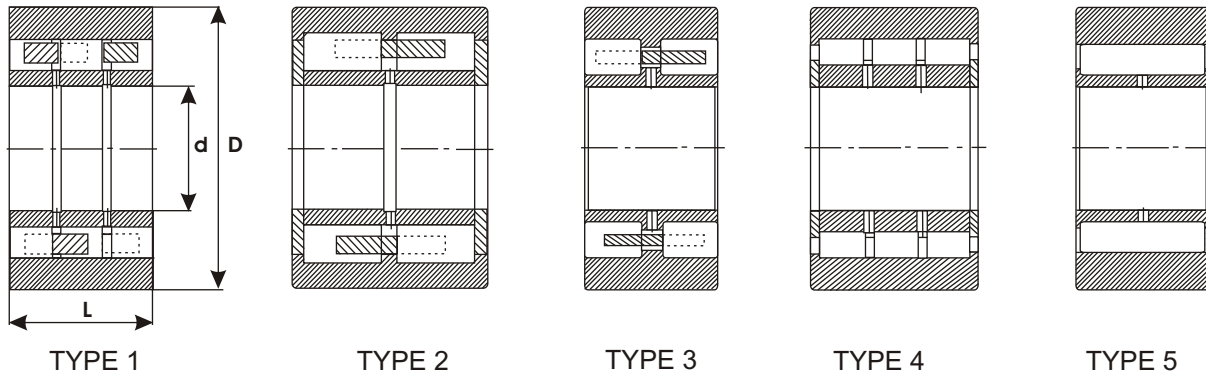
F - Full Complement

C - Cage

S - Sealed

CS - Cage and Sealed

SUPPORT ROLLERS (Back-up Roll Bearings for 20 HI Sendzmir CRM)



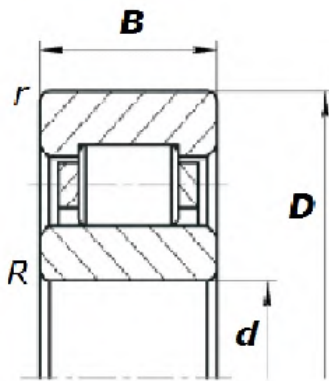
JMC. No.	S I Z E (mm)			LOAD RATING dyn. in TONS			Wt. Kg.	TYPE	EQV. No.
	d	D	L	C Bearing	C Support Roller	Max load Fr Max			
BKP-B-55/120/52	55	120	52	12.5	12.5	19	3.3	5	FAG-110-6559 SKF-396040
BKP-B-70/160/90	70	160.02	90	45.5	41.5	47	10	1	FAG-540268 A SKF-315268 B
BKP-B-90/220/94	90	220	94	50	46	40	21	3	FAG-541332 A SKF-BC28-319343C
BKP-B-100/225/120	100	225	120	85	78	63	27.7	1	FAG-543638 A SKF-319168
BKP-B-100/225/120	100	225	120	85	78	63	27.7	1	SKF-315018 A
BKP-B-130/300/160	130	300	160	135	115	85	66	1	Torrington W-2050 B FAG 528930
BKP-B-130/300/171	130	300	172.75	146	122	95	71.5	1	KOYO-26 DC/ 30170 D5Y 1
BKP-B-130/300/171	130	300.02	171.60	146	122	95	70	2	FAG-549722 SKF-BC2B320432A
BKP-B-180/406/217	180	406.42	217	240	210	230	150	1	FAG-514278 A SKF-451585 A

Also, we do supply Inner Race, Outer Races, Rollers & Spacers of the above Bearing, separately.

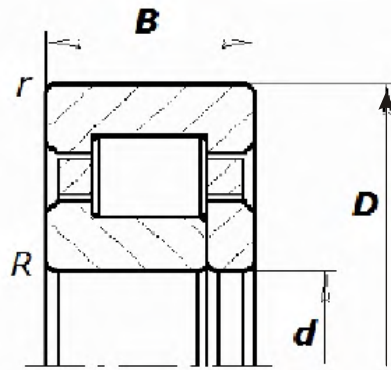
CYLINDRICAL ROLLER BEARINGS - SINGLE ROW



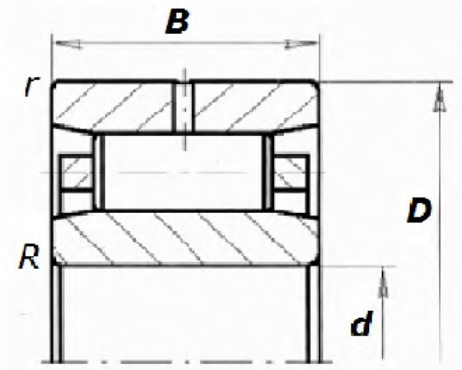
CYLINDRICAL ROLLER BEARINGS - SINGLE ROW



TYPE - 1



TYPE - 2



TYPE - 3

JMC. No.	SIZE (mm)			LOAD RATING TONS		Wt. Kg.	TYPE	EQV. No.
	d	D	B	Dyn. C	Stat. Co			
CRB1-B-NU-100/215/47	100	215	47	44	43	8.91	1	NU 320
CRB1-B-NU-120/260/55	120	260	55	60	61	15.2	1	NU 324
CRB1-B-N-120/260/55	120	260	55	60	61	15	N	N 324
CRB1-B-NU-150/320/65	150	320	65	90	95	27.5	1	NU 330
CRB1-B-NU-150/270/89	150	270	88.9	86	140	-	1	E5230U
CRB1-B-NU.2-160/290/197/SPL	160 (193.9)	290	196.85	159	301	-	SPL	E5232U-R/E6232B-L
CRB1-B-N-170/360/72	170	360	72	94	115	38.5	N	N 334
CRB1-B-NU-180/320/108	180	320	108	105	172	-	1	E5236U
CRB1-B-NU-200/360/120	200	360	120	135	225	-	1	E5240U
CRB1-B-NU-210/340/95	210 (244.5) (242.5)	340	95.2	96	167	-	1	MUC5142
CRB1-B-NU-220/400/108	220	400	108	150	220	62.5	1	USSR 32544
CRB1-B-NUP-260/400/65	260	400	65	79	116	31.7	2	USSR 92152
CRB1-B-280/440/135	280	440	135	160	290	98.9	3	USSR 132756
CRB1-B-NU-280/500/165	280	500	165	285	501	-	1	E5256U
CRB1-B-NUP-460/620/95	460	620	95	160	343	91	2	USSR 2092992
CRB1-B-NU-400/650/145	400	650	145	260	465	196	1	USSR 2032780
CRB1-B-NU-600/830/150-SPL	600	830	150	282	614	254	1	USSR 327/600
CRB1-B-NU-700/930/160-SPL	700	930	160	300	655	300	1	USSR 327/700
CRB1-B-N-K-AH-140/280/93/119	140	280	93/119	-	-	28.4	-	USSR 72727

MULTI ROW CYLINDRICAL ROLLER BEARINGS



Roll neck bearings are very heavily loaded and subjected to high pressure. They are used where space restriction in radial direction is very severe.

This is a bearing of low section heights with high load carrying capacity.

The available mounting space should be primarily used to accommodate the radial bearings since by comparison to the radial loads, the axial loads are relatively small.

Cylindrical Roller Bearing having the same cross section and the same ring sections accommodates larger diameter roller than a spherical roller bearing or a tapered roller bearing.

Since the Roller diameter is the factor with the strongest impact on the load rating, the Cylindrical Roller has the highest load carrying capacity when compared to the other bearing types-on the basis of identical boundary dimensions.

A high degree of accuracy can be achieved with bearing comprising of parts of simplest geometry. Expending the same amount of workmanship the Cylindrical Roller Bearing will therefore exhibit a higher running accuracy than the tapered rollers or the Spherical Roller Bearing.

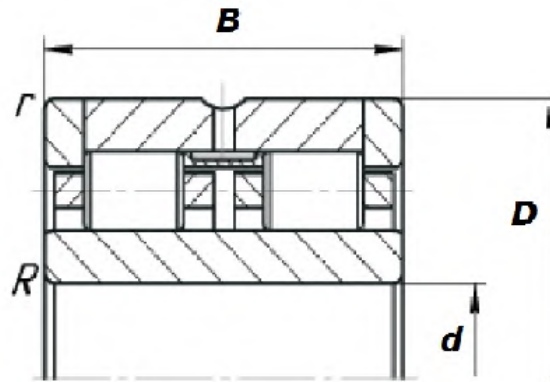
For high speed rolls the low rolling contact friction characteristic of the Cylindrical Roller Bearing is highly favourable.

Within a given mounting space Cylindrical Roller Bearing offer the greatest load carrying capacity. This bearing is suitable for highest radial loads and owing to its low friction coefficient, for highest speeds.

We can supply complete Bearing as well as Components (e.g.) as :

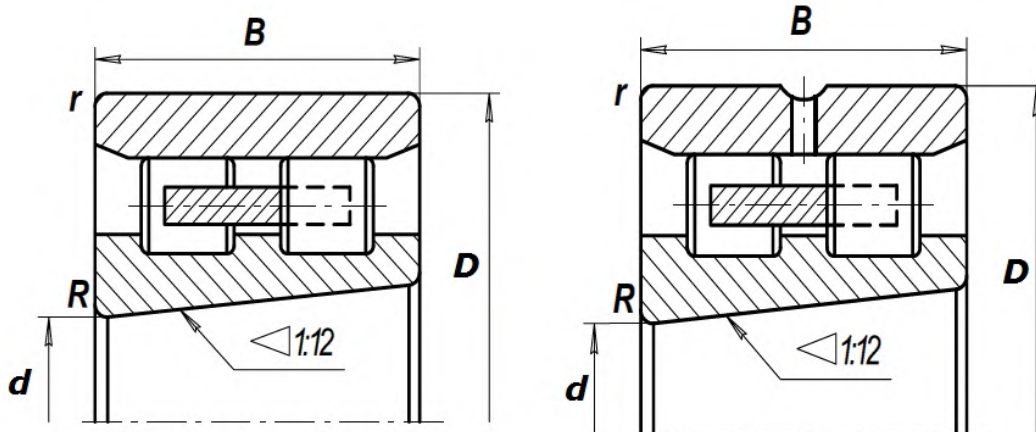
- **Complete Bearing : (MRCRB4-B-260/400/290 A)**
- **Outer Race with Roller Set & Cage : (MRCRB4 - R 260/400/290 A)**
- **Inner Race : (MRCRB4 - L 260/400/290 A)**

MULTI ROW CYLINDRICAL ROLLER BEARINGS - DOUBLE ROW



JMC. No.	SIZE (mm)			LOAD RATING TONS		Wt. Kg.	TYPE	EQV. No.
	d	D	B	Dyn. C	Stat. Co			
MRCRB2-B-460/680/218	460	680	218	375	855	288	SPL	USSR 4202192
MRCRB2-B-530/710/180	530	710	180	318	792	219	SPL	USSR 42629/530
MRCRB2-B-710/950/243/C3	710	950	243	570	1510	504	SPL	USSR 42629/710

MULTI ROW CYLINDRICAL ROLLER BEARINGS - DOUBLE ROW, TAPERED BORE

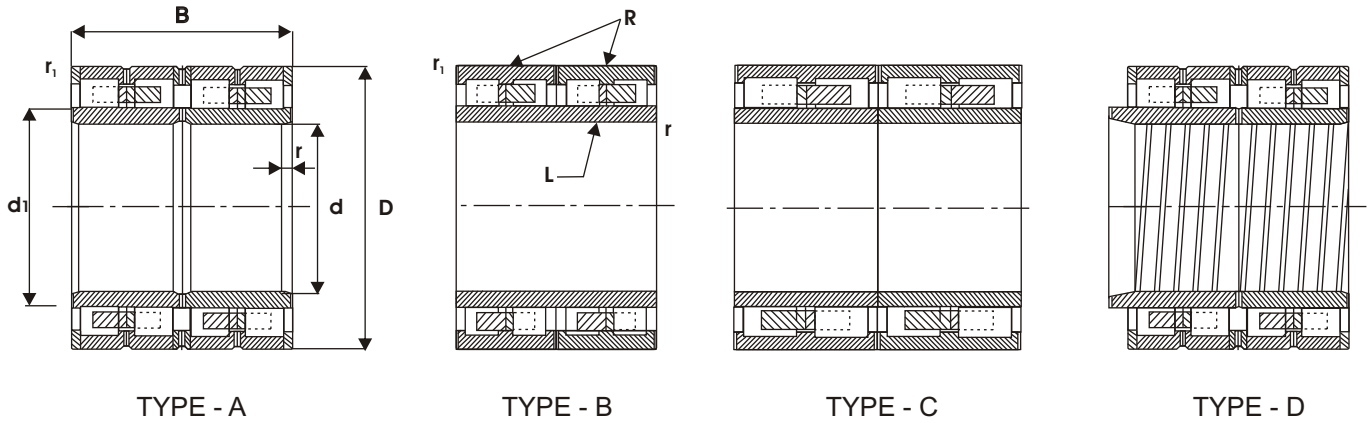


TYPE - 1

TYPE - 2

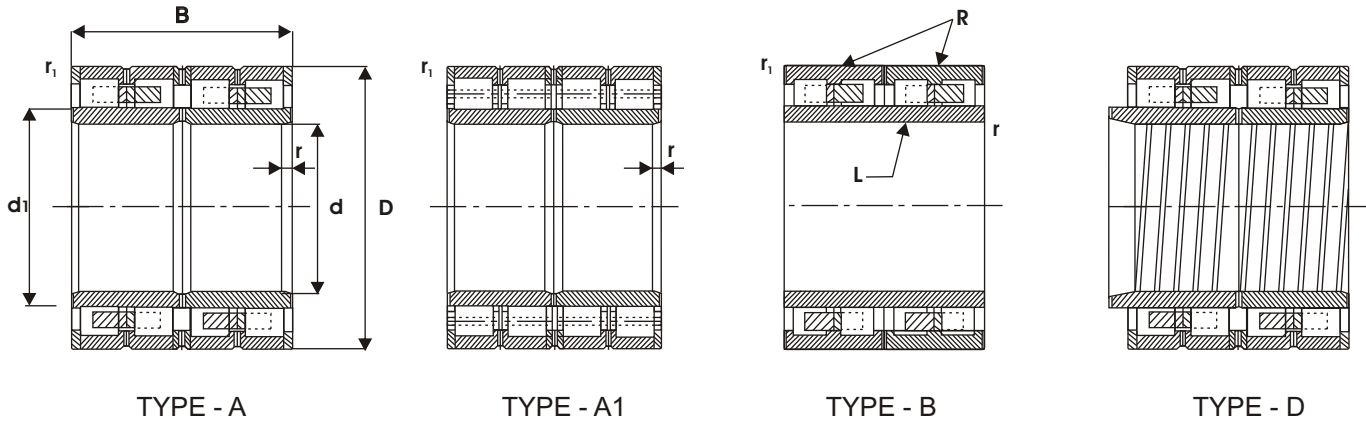
JMC. No.	SIZE (mm)			LOAD RATING TONS		Wt. Kg.	TYPE	EQV. No.
	d	D	B	Dyn. C	Stat. Co			
MRCRB2-B-NN-K-320/480/121	320	480	121	132	258	73.7	1	USSR 3182164
MRCRB2-B-NN-K-360/540/134	360	540	134	165	332	105	1	USSR 3182172
MRCRB2-B-NN-K-400/600/148	400	600	148	203	141	144	1	USSR 3182180
MRCRB2-B-NN-K-460/680/163	460	680	163	253	533	196	1	USSR 3182192

MULTI ROW CYLINDRICAL ROLLER BEARINGS - FOUR ROW



JMC. No.	SIZE (mm)				LOAD RATING TONS		Wt. Kg.	TYPE	EQV. No.
	d	D	B	d1	Dyn. C	Stat. Co			
MRCRB4-B-100/140/80	100	140	80	110	42	66	5	B	FAG-537676
MRCRB4-B-120/165/90	120	165	90	132	50	76	5.55	B	FAG-537675
MRCRB4-B-145/210/155	145	210	155	166	102	175	18	B	SKF-314625 A FAG-511605 KOYO-29FC21155C4
MRCRB4-B-145/225/156	145	225	156	169	105	160	22.7	B	SKF-313924 A FAG-538522
MRCRB4-B-150/230/156	150	230	156	174	105	180	24	B	SKF-313891 A FAG-506962 OR FAG-508955
MRCRB4-B-160/230/130	160	230	130	180	81	130	17.6	B	SKF-314190 FAG-502894A
MRCRB4-B-160/230/168	160	230	168	179	115	200	23.5	B	SKF-315189A FAG-510150
MRCRB4-B-165/225/168	165.10	225.45	168.3	181	100	190	20	C	SKF-2x315642 VJ202 FAG-529468.N12BA
MRCRB4-B-170/230/130	170	230	130	188.5	75	125	15	B	SKF-313673 FAG-508370
MRCRB4-B-170/240/156	170	240	156	190	115	210	19	B	NSK-170RV2403C*OB
MRCRB4-B-180/260/168	180	260	168	202	115	195	29.7	B	SKF-313812 A FAG-507536
MRCRB4-B-190/270/200	190	270	200	212	150	285	36.5	B	SKF-314199 B FAG-508657
MRCRB4-B-190/280/200	190	280	200	214	155	295	42	B	SKF-314049 A FAG-510199
MRCRB4-B-200/270/170	200	270	170	222	125	255	28.2	B	SKF-314553 A FAG-522742
MRCRB4-B-200/270/200	200	270	200	222	130	260	28.2	B	ARB-AD 5739D / NSK-200RV 2703C4P5AU332*OB
MRCRB4-B-200/280/170	200	280	170	223	145	250	33.5	B	SKF-314385 FAG-549864
MRCRB4-B-200/280/200	200	280	200	222	162	300	39	B	SKF-313893 FAG-508726
MRCRB4-B-200/290/192	200	290	192	226	172	295	42	B	SKF-313811 FAG-512580
MRCRB4-B-200/310/200	200	310	200	229	195	270	59	B	FAG-524373
MRCRB4-B-210/290/192	210	290	192	236	167	335	38.7	B	FAG-507628/SKF-313646 NSK-210RV2901C3*OB
MRCRB4-B-220/310/192	220	310	192	246	182	300	45.5	B	SKF-313839 FAG-507333
MRCRB4-B-220/310/225	220	310	225	244	210	400	54.2	B	SKF-313894 B FAG-514461

MULTI ROW CYLINDRICAL ROLLER BEARINGS - FOUR ROW



JMC. No.	SIZE (mm)				LOAD RATING TONS		Wt. Kg.	TYPE	EQV. No.
	d	D	B	d1	Dyn. C	Stat. Co			
MRCRB4-B-230/330/206	230	330	206	260	200	370	58	B	SKF-313824 FAG-508727
MRCRB4-B-230/365/250	230	365	250	266	300	410	100	A	SKF-313581 A FAG-529113
MRCRB4-B-240/330/220	240	330	220	270	190	390	57.5	B	SKF-313921 FAG-508368
MRCRB4-B-260/360/230	260	360	230	-	205	380	77	SPL	KOYO-452549
MRCRB4-B-260/370-220/240	260	370	220/240	292	210	390	79.5	D	FAG-536897
MRCRB4-B-260/370/220	260	370	220	292	210	390	77	B	SKF-313823 FAG-507336
MRCRB4-B-260/400/290	260	400	290	296	400	600	135	A	SKF-313427 FAG-518214
MRCRB4-B-280/390/220	280	390	220	312	220	410	82	B	SKF-313822 FAG-507339
MRCRB4-B-280/390/275	280	390	275	308	270	640	100	C	SKF-314719C
MRCRB4-B-290/440/310	290	440	310	328	410	700	164	B	FAG-517796
MRCRB4-B-300/420/300	300	420	300	332	410	780	130	A	SKF-314484 D FAG-524289 B
MRCRB4-B-320/460/240	320	460	240	364	270	650	140	C	SKF-BC2B 322216B/VJ202
MRCRB3-B-325/470/ 271/281[SG]	325	470	271/281	364.13	395	810	166	SPL	BSC-456986
MRCRB4-B-330/460/340	330	460	340	365	430	900	175	A	SKF-313445 C FAG-543447
MRCRB4-B-340/480/350	340	480	350	378	560	1125	207	A1	FAG-525837 A
MRCRB4-B-340/480/350	340	480	350	378	520	1050	205	A	SKF-314485A FAG-527634
MRCRB4-B-360/500/250	360	500	250	394	270	650	140	C	SKF-BC2B 320075D/VJ202
MRCRB4-B-374/520/ 360/370[SG]	374.65	520	360/370	414.6	595	1190	250	SPL	BSC-456985
MRCRB4-B-380/540/300	380	540	300	421	505	900	217	A	SKF-313030 A FAG-541982
MRCRB4-B-380/540-380/400	380	540	380/400	424	570	1370	295	D	SKF-315606 / KOYO-76FCS4380
MRCRB4-B-400/560/410	400	560	410	445	650	1250	325	A	SKF-313015A FAG-513769A
MRCRB4-B-440/620/450	440	620	450	487	790	1950	440	A	SKF-314554 / KOYO-88FC62450A
MRCRB4-B-536/762/558	536.176	762.030	558.800	598	1250	2900	872	A1	SKF-313535B FAG-524544A

SPLIT ROLLER BEARINGS



JMC Split Bearing is basically a Cylindrical Roller Bearing cut into two halves.

All the components (i.e.) Inner Race, Outer Race and Roller Cage assembly are all split on a highly sophisticated equipment to retain the original :

- a) Microstructure
- b) Surface finish
- c) Geometry in all respects
- d) Accuracy

These bearings are used mainly in the middle of shafts where mounting and dismounting can be done without disturbing adjacent components.

These bearings are called as crank pin bearings of heavy duty connecting rods.

The bore is so accurately dimensioned as to have firm seat on the shaft just by tightening the side bolts. Hence use of additional accessory like heated oil bath or induction heater for press fit, is eliminated.

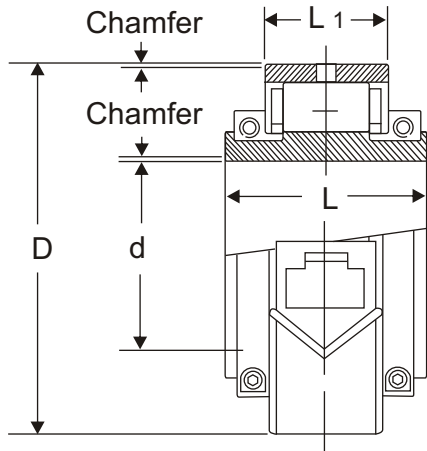
It is an ideal support in the middle of long shaft, without any step, recess or threading and hence can be fitted firmly any where along the length of the cold drawn shaft of h11 tolerance.

The Bearing can be serviced or replaced easily without disturbing the adjacent components.

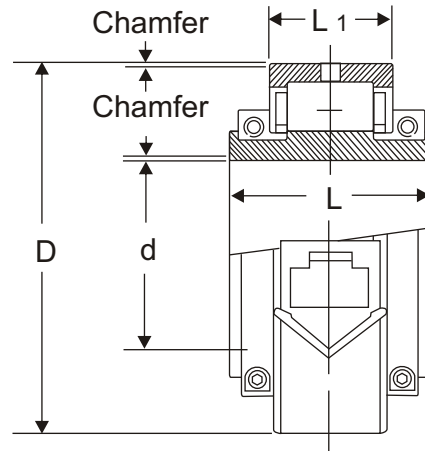
Reduces Downtime and Installation Cost.

- **We also supply Split Roller Bearings with Housings like : Cartridge and Pedestal, Flange, Take-Up etc.**

SPLIT ROLLER BEARINGS



Floating Type FL



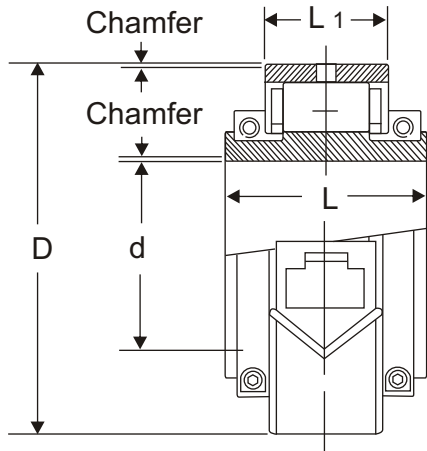
Locating Type LC

MEDIUM SERIES - MM

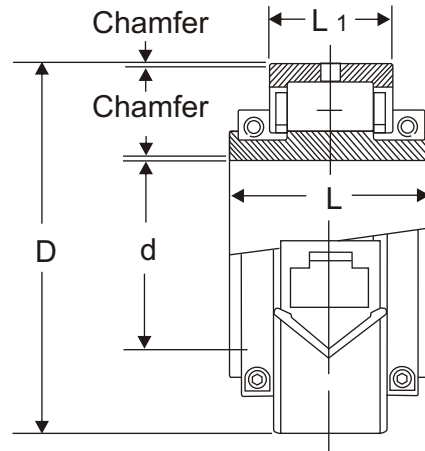
JMC No. ('FL' or 'LC')	SIZE (mm)				BEARING RATINGS (IN TONS)			MAX RPM nm	WT. Kg.	EQV. No. COOPER (EX or GR) MM
	d	D	L1	L	Dynamic C	Static Co	Axial Ca			
SRB-B-MSM-150	50	98.42	25.4	55.7	4.5	6.0	0.18	4600	1.5	01 B 50
SRB-B-MSM - 160	60	114.30	27.0	55.7	6.0	7.5	0.27	3900	1.5	01 B 60
SRB-B-MSM - 165	65									01 B 65
SRB-B-MSM - 170	70	133.35	31.8	61.2	8.6	10.6	0.38	3300	2.5	01 B 70
SRB-B-MSM - 175	75									01 B 75
SRB-B-MSM - 180	80	152.40	38.9	70.7	12.7	14.7	0.62	2800	4.0	01 B 80
SRB-B-MSM - 185	85									01 B 85
SRB-B-MSM - 190	90	174.62	45.3	81.0	17.1	19.7	0.80	2350	6.0	01 B 90
SRB-B-MSM - 1100	100									01 B 100
SRB-B-MSM - 1110	110	203.20	46.9	84.9	22.3	24.6	0.93	1975	9.0	01 B 110
SRB-B-MSM - 1115	115									01 B 115
SRB-B-MSM - 1120	120	222.25	54.0	89.7	26.3	28.7	1.11	1750	11.0	01 B 120
SRB-B-MSM - 1125	125									01 B 125
SRB-B-MSM - 1130	130	241.30	55.6	98.4	29.4	31.9	1.29	1575	14.0	01 B 130
SRB-B-MSM - 1140	140									01 B 140
SRB-B-MSM - 1150	150	254.00	55.6	98.4	33.1	34.7	1.47	1450	16.0	01 B 150
SRB-B-MSM - 1160	160									01 B 160
SRB-B-MSM - 1170	170	273.05	60.3	109.0	37.8	39.3	1.65	1320	20.0	01 B 170
SRB-B-MSM - 1180	180									01 B 180

While placing order, mention the required type of Bearing. (Floating-FL / Locating-LC)

SPLIT ROLLER BEARINGS



Floating Type FL



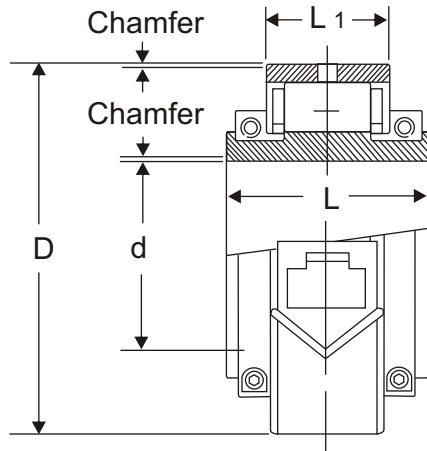
Locating Type LC

MEDIUM SERIES - MM

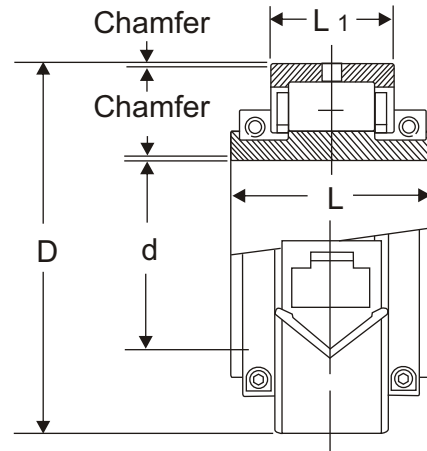
JMC No. ('FL' or 'LC')	SIZE (mm)				BEARING RATINGS (IN TONS)			MAX RPM nm	WT. Kg.	EQV. No. COOPER (EX or GR) MM
	d	D	L1	L	Dynamic C	Static Co	Axial Ca			
SRB-B-MSM - 1190	190	311.15	60.3	109.0	45.0	46.2	2.05	1100	25.0	01 B 190
SRB-B-MSM - 1200	200									01 B 200
SRB-B-MSM - 1220	220	342.90	63.5	115.0	49.2	51.0	2.45	950	32.0	01 B 220
SRB-B-MSM - 1240	240	374.65	66.7	122.0	55.0	60.3	2.89	800	40.0	01 B 240
SRB-B-MSM - 1260	260	406.40	69.0	128.0	63.7	69.2	3.34	750	50.0	01 B 260
SRB-B-MSM - 1280	280									01 B 280
SRB-B-MSM - 1300	300	438.15	74.6	143.0	66.8	75.0	3.91	650	60.0	01 B 300
SRB-B-MSM - 1320	320	463.55	74.6	136.0	75.3	83.5	4.3	580	72	01 B 320
SRB-B-MSM - 1340	340	488.95	74.6	136.0	77.5	90.0	4.5	525	78	01 B 340
SRB-B-MSM - 1360	360	520.70	76.2	140.0	84.5	97.5	5.5	500	86	01 B 360
SRB-B-MSM - 1380	380									01 B 380
SRB-B-MSM - 1400	400	546.10	76.2	140.0	87.5	104.0	5.7	450	95	01 B 400
SRB-B-MSM - 1420	420	571.50	76.2	140.0	90	112.0	6	430	104	01 B 420
SRB-B-MSM - 1440	440	596.90	76.2	140.0	92	118.0	6.2	400	114	01 B 440
SRB-B-MSM - 1460	460									01 B 460
SRB-B-MSM - 1480	480	628.65	81.0	144.0	95.5	120.0	6.5	370	128	01 B 480
SRB-B-MSM - 1500	500	654.05	80.2	168.0	99.5	128.0	6.6	350	136	01 B 500
SRB-B-MSM - 1530	530	692.15	81.0	168.0	101	135.0	6.9	335	164	01 B 530
SRB-B-MSM - 1560	560	717.55	81.0	168.0	105	144.0	7.0	325	178	01 B 560
SRB-B-MSM - 1600	600	774.70	84.1	172.0	115	162.0	7.1	290	210	01 B 600

While placing order, mention the required type of Bearing. (Floating-FL / Locating-LC)

SPLIT ROLLER BEARINGS



Floating Type FL



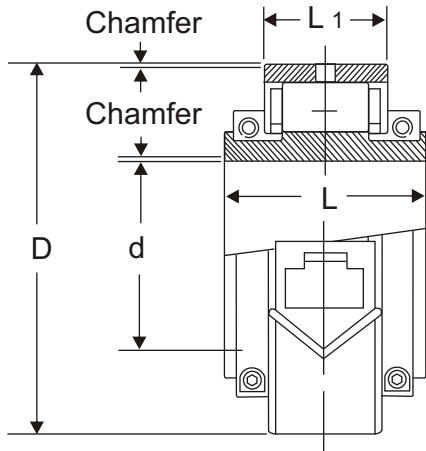
Locating Type LC

HEAVY SERIES - MM

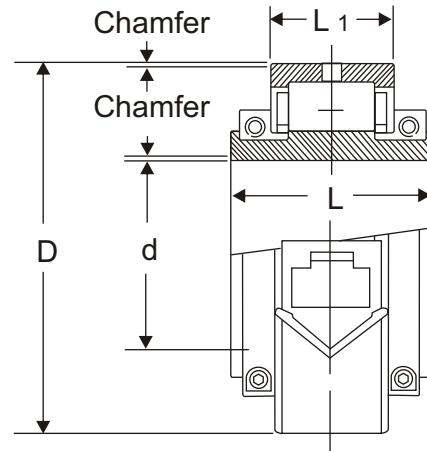
JMC No. ('FL' or 'LC')	S I Z E (mm)				B E A R I N G R A T I N G S (I N T O N S)			M A X R P M n m	W T. K g.	E Q V. N o. C O O P E R (E X o r G R) M M
	d	D	L1	L	Dynamic C	Static Co	Axial Ca			
SRB-B-HSM - 250	50	107.95	35	67.5	6.5	10.5	0.3	4300	2	02 B 50
SRB-B-HSM - 260	60	127.00	38.9	72.3	9.5	14	0.42	3600	3	02 B 60
SRB-B-HSM - 265	65									02 B 65
SRB-B-HSM - 270	70	149.22	46.1	82.6	14.5	17.5	0.5	3100	5	02 B 70
SRB-B-HSM - 275	75									02 B 75
SRB-B-HSM - 280	80									02 B 80
SRB-B-HSM - 285	85	169.86	48.4	89.7	19.5	22	0.9	2500	7	02 B 85
SRB-B-HSM - 290	90									02 B 90
SRB-B-HSM - 2100	100	193.68	51.6	92.1	25.6	29	1.2	2100	9	02 B 100
SRB-B-HSM - 2110	110	228.60	57.2	100	32	36	1.5	1800	16	02 B 110
SRB-B-HSM - 2115	115									02 B 115
SRB-B-HSM - 2120	120									02 B 120
SRB-B-HSM - 2125	125	254.00	63.5	114.3	40	44	2	1600	20	02 B 125
SRB-B-HSM - 2130	130									02 B 130
SRB-B-HSM - 2140	140	273.05	66.7	117.5	45.5	49	2.2	1450	24	02 B 140
SRB-B-HSM - 2150	150	292.10	68.3	123.8	56	59	2.5	1300	29	02 B 150
SRB-B-HSM - 2160	160	317.50	83.30	140.00	57.50	62.00	3.00	1200	39	02 B 160
SRB-B-HSM - 2170	170									02 B 170
SRB-B-HSM - 2180	180	330.20	83.3	140	66	68.5	3.5	1100	45	02 B 180

While placing order, mention the required type of Bearing. (Floating-FL / Locating-LC)

SPLIT ROLLER BEARINGS



Floating Type FL



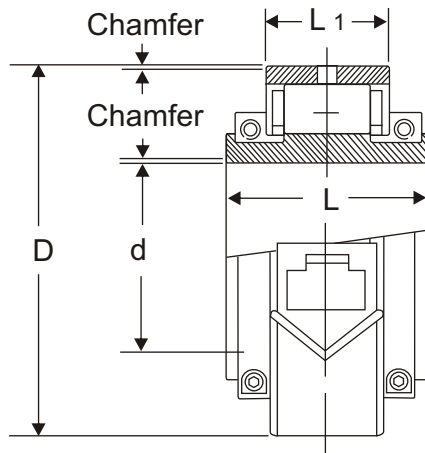
Locating Type LC

HEAVY SERIES - MM

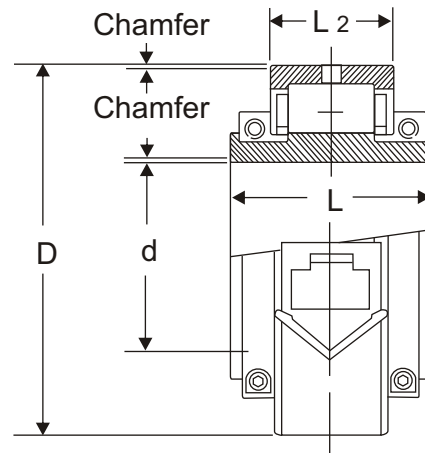
JMC No. ('FL' or 'LC')	S I Z E (mm)				B E A R I N G R A T I N G S (I N T O N S)			M A X R P M n m	W T. K g.	E Q V. N o. C O O P E R (E X o r G R) M M
	d	D	L1	L	D y n a m i c C	S t a t i c C o	A x i a l C a			
SRB-B-HSM - 2190	190	368.30	90.5	156	78	80	4	950	59	02 B 190
SRB-B-HSM - 2200	200									02 B 200
SRB-B-HSM - 2220	220	393.70	90.5	163	87	88.5	4.5	850	68	02 B 220
SRB-B-HSM - 2240	240	431.80	96.80	170	98	100	5	750	77	02 B 240
SRB-B-HSM - 2260	260									02 B 260
SRB-B-HSM - 2280	280	463.55	101.60	186	113.5	120	5.5	670	86	02 B 280
SRB-B-HSM - 2300	300	495.30	103.20	193	125	130	6	600	123	02 B 300
SRB-B-HSM - 2320	320	527.05	106.40	192	138	140	6.8	540	150	02 B 320
SRB-B-HSM - 2340	340	565.15	115.90	200	155	156	7.5	500	182	02 B 340
SRB-B-HSM - 2360	360									02 B 360
SRB-B-HSM - 2380	380	584.20	111.10	200	164.5	166.5	8.5	450	186	02 B 380
SRB-B-HSM - 2400	400	615.95	115.90	200	170	180	9.2	430	209	02 B 400
SRB-B-HSM - 2420	420	647.70	119.10	200	181	190	10.6	400	241	02 B 420
SRB-B-HSM - 2440	440	666.75	115.90	200	190	205	10.2	380	250	02 B 440
SRB-B-HSM - 2460	460									02 B 460
SRB-B-HSM - 2480	480	698.50	119.10	223	200	225	11.1	360	263	02 B 480
SRB-B-HSM - 2500	500	717.55	115.90	226	205	240	11.9	340	272	02 B 500
SRB-B-HSM - 2530	530	762.00	119.10	229	226	260	12.5	330	309	02 B 530
SRB-B-HSM - 2560	560	793.75	122.20	233	239	277	13.0	310	336	02 B 560
SRB-B-HSM - 2600	600	838.20	119.10	214	250	300	14.3	290	381	02 B 600

While placing order, mention the required type of Bearing. (Floating-FL / Locating-LC)

SPLIT ROLLER BEARINGS



Floating Type FL



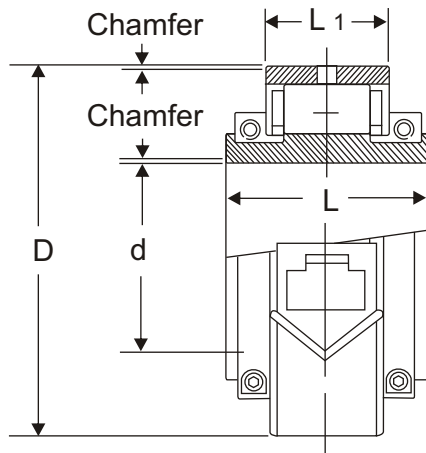
Locating Type LC

EXTRA HEAVY SERIES - (MM)

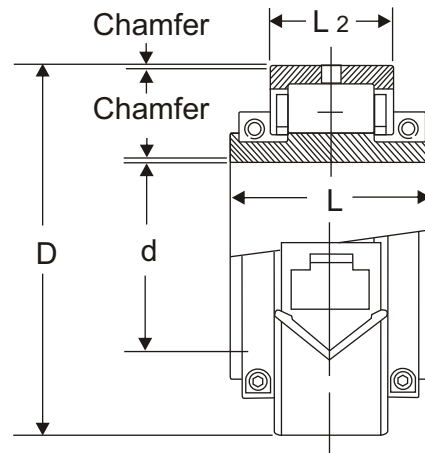
JMC No. ('FL' or 'LC')	SIZE (mm)					BEARING RATINGS (IN TONS)			MAX RPM nm	WT. Kg.	EQV. No. COOPER (EX or GR) MM
	d	D	L1	L2	L	Dynamic C	Static Co	Axial Ca			
SRB-B-EHM - 3100	100	254.00	84.2	84.2	136	42	49	1.5	1800	30	03 B 100
SRB-B-EHM - 3110	110	266.70	87.3	87.3	147	42	50	1.9	1650	36	03 B 110
SRB-B-EHM - 3120	120										
SRB-B-EHM - 3130	130	279.40	73.1	84.2	140	50	60	2.4	1500	36	03 B 130
SRB-B-EHM - 3140	140	304.80	79.4	90.5	147	64	72	2.9	1350	44	03 B 140
SRB-B-EHM - 3150	150	330.20	81	96.9	160	72	81	3.4	1225	57	03 B 150
SRB-B-EHM - 3160	160	355.60	103.2	103.2	171	90	94	3.9	1100	72	03 B 160
SRB-B-EHM - 3170	170										
SRB-B-EHM - 3180	180	374.65	92.1	108.8	178	98	101	4.4	1050	79	03 B 180
SRB-B-EHM - 3190	190	419.10	97.7	118.3	191	115	119	4.9	900	105	03 B 190
SRB-B-EHM - 3200	200										
SRB-B-EHM - 3220	220	469.90	109.6	131.8	212	122	150	5.3	750	145	03 B 220
SRB-B-EHM - 3240	240	482.60	105.6	124.6	211	142	166.5	6.5	700	150	03 B 240
SRB-B-EHM - 3260	260										
SRB-B-EHM - 3280X	280	520.70	131.8	131.8	231	163.5	178	7.5	610	197	03X B 280
SRB-B-EHM - 3280E	280	495.30	139.7	139.7	244	178.5	193	7.5	610	182	03E B 280
SRB-B-EHM - 3300	300	558.80	139.7	139.7	244	180	197.5	8.7	550	238	03 B 300

While placing order, mention the required type of Bearing. (Floating-FL / Locating-LC)

SPLIT ROLLER BEARINGS



Floating Type FL



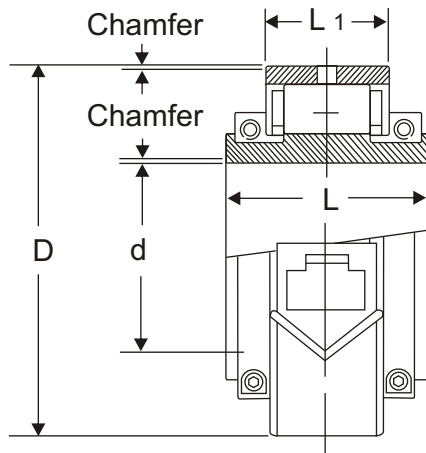
Locating Type LC

EXTRA HEAVY SERIES - (MM)

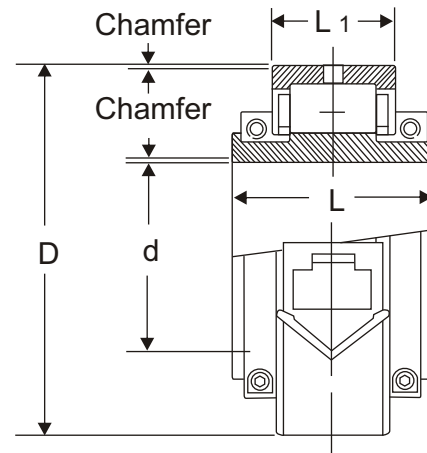
JMC No. ('FL' or 'LC')	SIZE (mm)					BEARING RATINGS (IN TONS)			MAX RPM nm	WT. Kg.	EQV. No. COOPER (EX or GR) MM
	d	D	L1	L2	L	Dynamic C	Static Co	Axial Ca			
SRB-B-EHM - 3320	320	622.3	160.4	160.4	272	210	235	9.5	500	327	03 B 320
SRB-B-EHM - 3340	340	615.95	158	158	279	235	250	10.1	450	318	03 B 340
SRB-B-EHM - 3360	360									318	03 B 360
SRB-B-EHM - 3360X	360	647.7	160.4	160.4	279	235	255	11	450	372	03X B 360
SRB-B-EHM - 3380	380	685.8	166.7	166.7	292	260	271	11.5	415	431	03 B 380
SRB-B-EHM - 3400	400									431	03 B 400
SRB-B-EHM - 3420E	420	700	160	160	284	315	320	13.1	355	395	03E B 420
SRB-B-EHM - 3440E	440									395	03E B 440
SRB-B-EHM - 3460E	460	740	170	170	294	330	330	14.5	340	431	03E B 460
SRB-B-EHM - 3460X	460	800.1	187.4	187.4	300	335	345	14.6	340	630	03X B 460
SRB-B-EHM - 3480X	480									630	03X B 480
SRB-B-EHM - 3500	500	850.9	187.4	187.4	300	370	375	16.5	305	730	03 B 500
SRB-B-EHM - 3530	530									730	03 B 530

While placing order, mention the required type of Bearing. (Floating-FL / Locating-LC)

SPLIT ROLLER BEARINGS



Floating Type FL



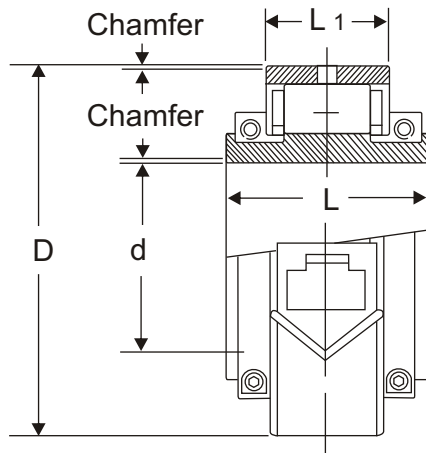
Locating Type LC

MEDIUM SERIES - INCH

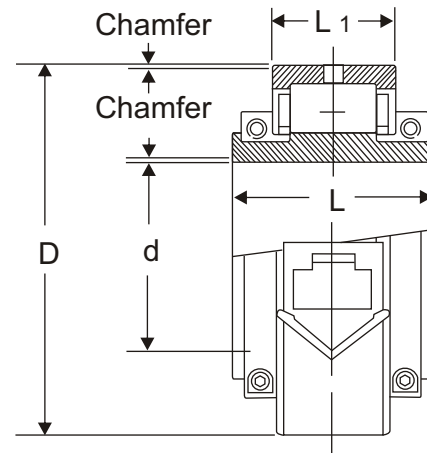
JMC No. ('FL' or 'LC')	S I Z E (Inch)				B E A R I N G R A T I N G S (I N T O N S)			M A X R P M n m	W T. K g.	E Q V. N o. C O O P E R (E X o r G R)
	d	D	L1	L	Dynamic C	Static Co	Axial Ca			
SRB-B-MSI - 1112	1.3/4	3.7/8	1.0	2.3/16	4.50	6.20	0.18	4600	1.50	01 B 112
SRB-B-MSI - 1200	2									01 B 200
SRB-B-MSI - 1204	2.1/4	4.1/2	1.1/16	2.3/16	6.00	7.80	0.26	4000	1.50	01 B 204
SRB-B-MSI - 1208	2.1/2									01 B 208
SRB-B-MSI - 1212	2.3/4	5.1/4	1.1/4	2.13/32	8.50	10.60	0.37	3300	2.50	01 B 212
SRB-B-MSI - 1300	3									01 B 300
SRB-B-MSI - 1304	3.1/4	6.00	1.17/32	2.25/32	12.50	14.70	0.61	2800	4.00	01 B 304
SRB-B-MSI - 1308	3.1/2									01 B 308
SRB-B-MSI - 1312	3.3/4	6.7/8	1.25/32	3.3/16	17.00	19.80	0.79	2350	6.00	01 B 312
SRB-B-MSI - 1400	4									01 B 400
SRB-B-MSI - 1408	4.1/2	8.00	1.27/32	3.11/32	22.30	24.60	0.92	1975	9.00	01 B 408
SRB-B-MSI - 1500	5									01 B 500
SRB-B-MSI - 1508	5.1/2	9.1/2	2.3/16	3.7/8	29.40	31.80	1.27	1575	14.00	01 B 508
SRB-B-MSI - 1600	6									01 B 600

While placing order, mention the required type of Bearing. (Floating-FL / Locating-LC)

SPLIT ROLLER BEARINGS



Floating Type FL



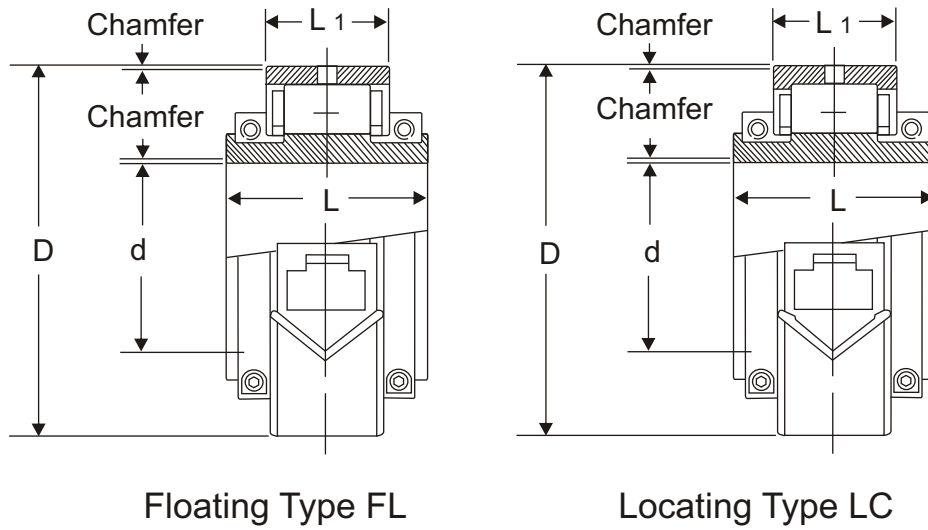
Locating Type LC

MEDIUM SERIES - INCH

JMC No. ('FL' or 'LC')	S I Z E (Inch)				BEARING RATINGS (IN TONS)			MAX RPM nm	WT. Kg.	EQV. No. COOPER (EX / EXIG or GR)
	d	D	L1	L	Dynamic C	Static Co	Axial Ca			
SRB-B-MSI - 1608	6.1/2	10.3/4	2.3/8	4.5/16	37.60	39.20	1.62	1320	20.50	01 B 608
SRB-B-MSI - 1700	7	11.1/4	2.3/16	4.5/16	41.70	42.10	1.80	1225	22.00	01 B 700
SRB-B-MSI - 1800	8	12.1/4	2.3/8	4.5/16	44.70	45.90	2.00	1100	25.50	01 B 800
SRB-B-MSI - 1900	9	13.1/2	2.1/2	4.17/32	48.80	50.60	2.40	950	29.00	01 B 900
SRB-B-MSI - 11000	10	14.3/4	2.5/8	4.13/16	54.40	62.90	2.80	800	38.00	01 B 1000
SRB-B-MSI - 11100	11	16	2.23/32	5.1/16	62.50	68.70	3.10	750	45.50	01 B 1100
SRB-B-MSI - 11200	12	17.1/4	2.15/16	5.5/8	68.00	80.50	3.80	650	59.00	01 B 1200
SRB-B-MSI - 11300	13	18.1/4	2.15/16	5.3/4	75.30	83.50	4.30	580	73.00	01 B 1300
SRB-B-MSI - 11400	14	19.1/4	2.15/16	5.3/4	77.50	90.00	4.50	525	77.00	01 B 1400
SRB-B-MSI - 11500	15	20.1/2	3	5.31/32	84.50	97.50	5.50	500	86.00	01 B 1500
SRB-B-MSI - 11600	16	21.1/2	3	6.11/32	87.50	104.00	5.70	450	95.00	01 B 1600
SRB-B-MSI - 11700	17	22.1/2	3	6.15/32	90.00	112.00	6.00	430	104.00	01 B 1700
SRB-B-MSI - 11800	18	23.1/2	3	6.19/32	92.00	118.00	6.20	400	114.00	01 B 1800
SRB-B-MSI - 11900	19	24.3/4	3.3/16	6.7/8	96.00	124.00	6.50	380	125.00	01 B 1900
SRB-B-MSI - 12000	20	25.3/4	3.5/32	7	99.00	130.00	6.80	350	134.00	01 B 2000
SRB-B-MSI - 12100	21	27.1/4	3.3/16	7.3/8	105.00	135.00	7.00	335	160.00	01 B 2100
SRB-B-MSI - 12200	22	28.1/4	3.3/16	7.1/2	107.00	145.00	7.50	330	174.00	01 B 2200
SRB-B-MSI - 12300	23	29.1/2	3.5/16	7.3/4	115.00	155.00	7.80	300	195.00	01 B 2300
SRB-B-MSI - 12400	24	30.1/2	3.5/16	7.7/8	118.00	165.00	8.00	300	205.00	01 B 2400

While placing order, mention the required type of Bearing. (Floating-FL / Locating-LC)

SPLIT ROLLER BEARINGS

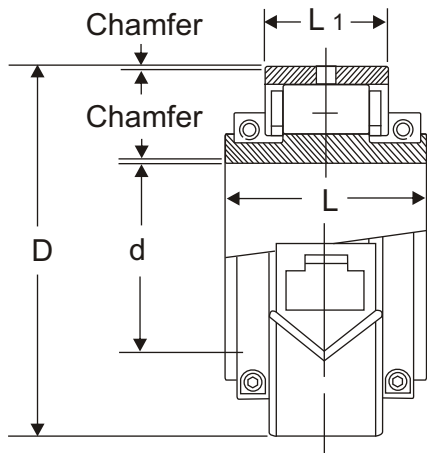


HEAVY SERIES - INCH

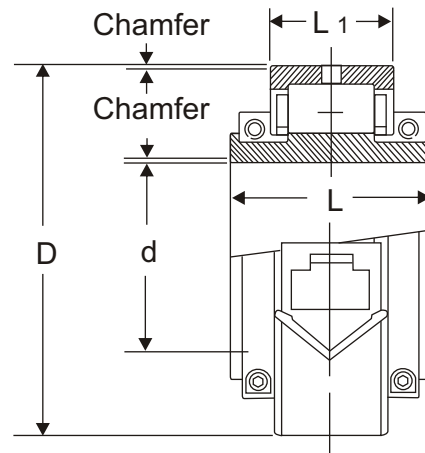
JMC No. ('FL' or 'LC')	SIZE (Inch)				BEARING RATINGS (IN TONS)			MAX RPM nm	WT. Kg.	EQV. No. COOPER (EX or GR)
	d	D	L1	L	Dynamic C	Static Co	Axial Ca			
SRB-B-HSI - 2112	1.3/4	4.1/4	1.3/8	2.21/32	6.5	10.4	0.3	4250	2	02 B 112
SRB-B-HSI - 2200	2									02 B 200
SRB-B-HSI - 2204	2.1/4	5	1.17/32	2.27/32	10.8	12.9	0.44	3600	3	02 B 204
SRB-B-HSI - 2208	2.1/2									02 B 208
SRB-B-HSI - 2212	2.3/4	5.7/8	1.13/16	3.1/4	14.7	17.4	0.52	3100	5	02 B 212
SRB-B-HSI - 2300	3									02 B 300
SRB-B-HSI - 2304	3.1/4	6.11/16	1.29/32	3.17/32	19.4	22.3	0.88	2500	7	02 B 304
SRB-B-HSI - 2308	3.1/2									02 B 308
SRB-B-HSI - 2312	3.3/4	7.5/8	2.1/32	3.5/8	25.7	28.9	1.23	2100	9	02 B 312
SRB-B-HSI - 2400	4									02 B 400
SRB-B-HSI - 2408	4.1/2	9	2.1/4	3.15/16	32.2	35.8	1.54	1800	16	02 B 408
SRB-B-HSI - 2500	5	10	2.1/2	4.1/2	40	44	1.89	1600	20	02 B 500
SRB-B-HSI - 2508	5.1/2	10.3/4	2.5/8	4.5/8	45.1	49.3	2.24	1450	24	02 B 508
SRB-B-HSI - 2600	6	11.1/2	2.11/16	4.7/8	55.8	58.8	2.59	1300	29	02 B 600

While placing order, mention the required type of Bearing. (Floating-FL / Locating-LC)

SPLIT ROLLER BEARINGS



Floating Type FL



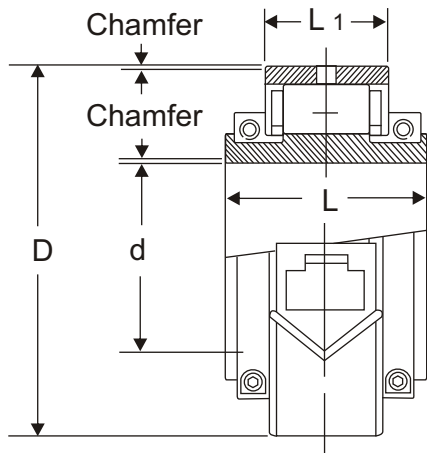
Locating Type LC

HEAVY SERIES - INCH

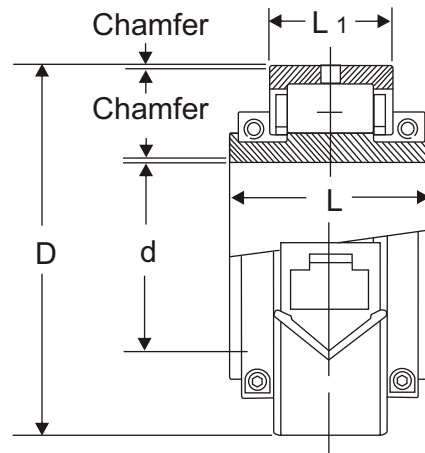
JMC No. ('FL' or 'LC')	SIZE (Inch)				BEARING RATINGS (IN TONS)			MAX RPM nm	WT. Kg.	EQV. No. COOPER (EX / EXIG or GR)
	d	D	L1	L	Dynamic C	Static Co	Axial Ca			
SRB-B-HSI - 2608	6.1/2	12.1/2	3.9/32	5.1/2	57.5	62.1	3	1200	39	02 B 608
SRB-B-HSI - 2700	7	13	3.9/32	5.1/2	65.7	68.3	3.5	1120	45	02 B 700
SRB-B-HSI - 2800	8	14.1/2	3.9/16	6.5/32	77.6	80	3.9	950	59	02 B 800
SRB-B-HSI - 2900	9	15.1/2	3.9/16	6.13/32	87	87.4	4.4	850	68	02 B 900
SRB-B-HSI - 21000	10	17	3.13/16	6.11/16	99.5	100.4	4.8	750	77	02 B 1000
SRB-B-HSI - 21100	11	18.1/4	4	7.11/32	113.5	120	5.5	670	86	02 B 1100
SRB-B-HSI - 21200	12	19.1/2	4.1/16	7.19/32	125	130	6	600	123	02 B 1200
SRB-B-HSI - 21300	13	20.3/4	4.3/16	7.31/32	138	140	6.8	540	150	02 B 1300
SRB-B-HSI - 21400	14	22.1/4	4.9/16	8.9/32	155	156	7.5	500	182	02 B 1400
SRB-B-HSI - 21500	15	23	4.3/8	8.1/8	164.5	166.5	8.5	450	186	02 B 1500
SRB-B-HSI - 21600	16	24.1/4	4.9/16	8.17/32	170	180	9.2	430	209	02 B 1600
SRB-B-HSI - 21700	17	25.1/2	4.11/16	8.21/32	180	190	9.8	400	241	02 B 1700
SRB-B-HSI - 21800	18	26.1/4	4.9/16	8.17/32	190	200	10	375	250	02 B 1800
SRB-B-HSI - 21900	19	27.1/2	4.11/16	8.25/32	195	205	10.5	350	263	02 B 1900
SRB-B-HSI - 22000	20	28.1/4	4.9/16	8.29/32	200	225	11	340	272	02 B 2000
SRB-B-HSI - 22100	21	30	4.11/16	9.1/32	205	240	11.5	330	309	02 B 2100
SRB-B-HSI - 22200	22	31.1/4	4.13/16	9.3/16	225	260	12.5	305	336	02 B 2200
SRB-B-HSI - 22300	23	32	4.11/16	9.5/32	235	275	13	300	340	02 B 2300
SRB-B-HSI - 22400	24	33	4.11/16	9.25/32	250	300	14	290	380	02 B 2400

While placing order, mention the required type of Bearing. (Floating-FL / Locating-LC)

SPLIT ROLLER BEARINGS



Floating Type FL



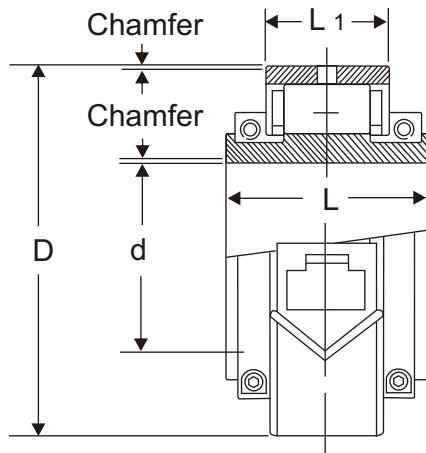
Locating Type LC

HEAVY SERIES - INCH (Special)

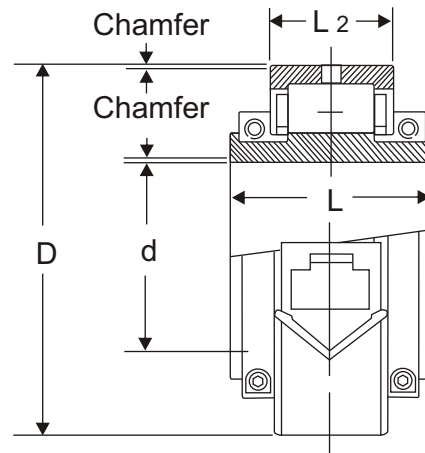
JMC No. ('FL' or 'LC')	S I Z E (Inch)				B E A R I N G R A T I N G S (I N T O N S)			M A X R P M n m	W T. K g.	E Q V. N o. C O O P E R
	d	D	L1	L	Dynamic C	Static Co	Axial Ca			
SRB-B-HSI - 2400F/SPL	4	8.1/8	3	3.5/8	33	41	1.3	2000	9	02 B 400 EX (SPL)
SRB-B-HSI - 2408F/SPL	4.1/2	8.7/8	3.1/4	3.15/16	38	46	1.4	1700	16	02 B 408 EX (SPL)
SRB-B-HSI - 2500F/SPL	5	9.5/8	3.1/2	4.1/2	49	60	1.7	1500	20	02 B 500 EX (SPL)

While placing order, mention the required type of Bearing. (Floating-FL / Locating-LC)

SPLIT ROLLER BEARINGS



Floating Type FL



Locating Type LC

EXTRA HEAVY SERIES - (INCH)

JMC No. ('FL' or 'LC')	S I Z E (Inch)					BEARING RATINGS (IN TONS)			MAX RPM nm	WT. Kg.	EQV. No. COOPER (EX or GR)
	d	D	L1	L2	L	Dynamic C	Static Co	Axial Ca			
SRB-B-EHI - 3400	4	10	3.5/16	3.5/16	5.3/8	42	48	1.5	1800	30	03B400
SRB-B-EHI - 3408	4.1/2	10.1/2	3.7/16	3.7/16	5.13/16	46	50	1.9	1650	36	03B408
SRB-B-EHI - 3500	5	11	2.7/8	3.5/16	5.1/2	50	60	2.4	1500	36	03B500
SRB-B-EHI - 3508	5.1/2	12	3.1/8	3.9/16	5.13/16	64	72	2.9	1350	44	03B508
SRB-B-EHI - 3600	6	13	3.3/16	3.13/16	6.5/16	72	81	3.4	1225	57	03B600
SRB-B-EHI - 3608	6.1/2	14	4.1/16	4.1/16	6.23/32	90	94	3.9	1100	72	03B608
SRB-B-EHI - 3700	7	14.3/4	3.5/8	4.9/32	7.1/32	98	101	4.4	1050	79	03B700
SRB-B-EHI - 3800	8	16.1/2	3.27/32	4.21/32	7.17/32	115	119	4.9	900	105	03B800
SRB-B-EHI - 3900	9	18.1/2	4.5/16	5.3/16	8.11/32	122	150	5.3	750	145	03B900
SRB-B-EHI - 31000	10	19	4.5/32	4.29/32	8.5/16	142	166.5	6.5	700	150	03B1000
SRB-B-EHI - 31100X	11	20.1/2	5.3/16	5.3/16	9.3/32	163.5	178	7.5	610	197	03XB1100
SRB-B-EHI - 31100E	11	19.1/2	5.1/2	5.1/2	9.5/8	178.5	193	7.5	610	182	03EB1100
SRB-B-EHI - 31200	12	22	5.1/2	5.1/2	9.5/8	180	197.5	8.7	550	238	03B1200
SRB-B-EHI - 31300	13	24.1/2	6.5/16	6.5/16	10.23/32	215	215	9.5	500	327	03B1300
SRB-B-EHI - 31400X	14	25.1/2	6.5/16	6.5/16	10.31/32	250	325	11.0	450	372	03XB1400
SRB-B-EHI - 31400E	14	24.1/4	6.1/4	6.1/4	11	230	260	10.5	450	318	03EB1400
SRB-B-EHI - 31500	15	27	6.9/16	6.9/16	11.1/2	255	270	12.5	415	432	03B1500
SRB-B-EHI - 31700E	17	27.56	6.3	6.3	11.18	290	350	13.5	355	395	03EB1700
SRB-B-EHI - 31800X	18	31.1/2	7.3/8	7.3/8	12.27/32	315	340	15.5	330	632	03XB1800
SRB-B-EHI - 31800E	18	29.135	6.69	6.69	11.58	305	355	15.0	330	431.5	03EB1800
SRB-B-EHI - 32000	20	33.1/2	7.3/8	7.3/8	13.11/32	345	385	17.5	300	731	03B2000

While placing order, mention the required type of Bearing. (Floating-FL / Locating-LC)

TAPER ROLLER BEARINGS



This type of Bearing are widely used in heavy industries like Steel Plants for conveyor system. Main advantage is within a given space double row will take maximum radial load. Generally they have one double cup (outer race) and two cones (inner race).

To achieve the required radial and axial clearance a spacer is provided in the factory, selectively for each bearing before final assembly.

By this arrangement assembly in the user shop floor is made much easier. Nut can be fully tightened and locked. No fine adjustment, taking back by 1/6 turn or torque loading are necessary.

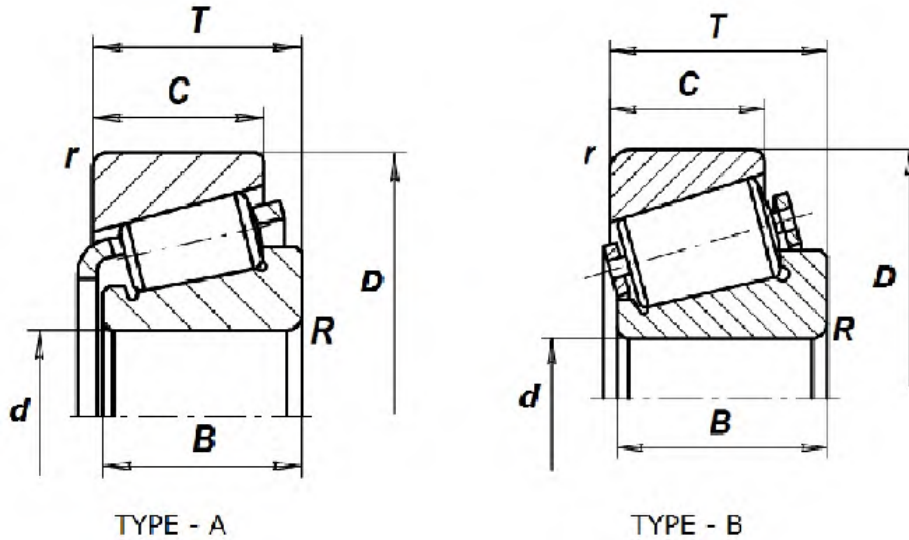
No separate provision is required to take thrust load. Radial as well as axial clearance can be either widened or narrowed depending on the end use requirement like :

- a) Tolerance to misalignment.
- b) Temperature change.
- c) Type of load (i.e.) frequency, direction, impact etc.

The Bearing and chock assembly can be removed from the next as a unit without loss or condemnation of lubricant. The chock assembly can be re-installed on another roll neck in a minimum of time. The space limitations on medium duty installations have made it necessary to provide narrow double row Taper Roller Bearings, thereby the bearings become cheaper in cost.

Applications where high load capacity in a minimum of width required, double row Taper Roller Bearings have been popular. In high speed applications like rolling mills subject to medium separating forces, double row Taper Roller Bearings with taper bore can be used. Assembly of two row Taper Roller Bearing is very easy. No pre-loading is necessary. It is a simplified design eliminating cumbersome construction and extra thrust devices.

TAPER ROLLER BEARINGS - SINGLE ROW

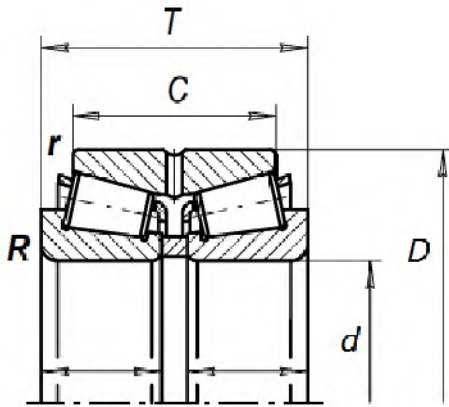


TYPE - A

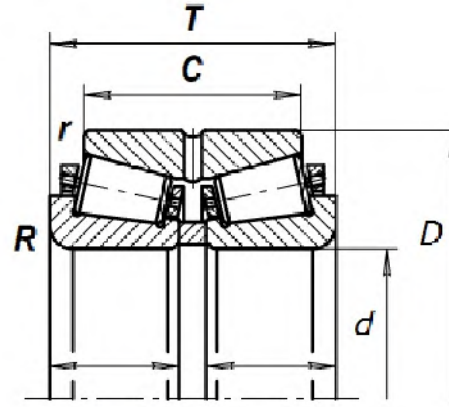
TYPE - B

JMC No.	SIZE (mm)					LOAD RATINGS (TONS)		Wt. Kg.	Type	EQV. No.
	d	D	T	B	C	Dyn. C	Stat. Co.			
TRB1-B-90/160/50	90	160	49.5	46	40.5	27	40	4.1	A	USSR 7718
TRB1-B-105/215/78	105	215	77.5	73	60	60	83	12.7	A	USSR 7721
TRB1-B-120/180/38	120	180	38	36	31	21	33	3.22	A	USSR 2007124
TRB1-B-160/375/87	160	375	86.55	79.4	50	84	101	39.6	A	USSR 7832*
TRB1-B-160/240/51	160	240	51	48	41	38	64	8.0	A	USSR 2007132
TRB1-B-160/290/84	160	290	84	80	67	81	132	22.2	A	USSR 7532
TRB1-B-170/230/38	170	230	38	36	31	28	58	4.5	A	USSR 2007934
TRB1-B-180/320/91	180	320	91	86	71	99	162	29.5	A	USSR 7536
TRB1-B-190/260/45	190	260	45	45	34	36	77	6.84	A	USSR 2007938
TRB1-B-190/290/50	190	290	50.25	46	40	38	61	11.8	A	USSR 7138
TRB1-B-190/340/97	190	340	97	92	75	95	155	35.4	A	USSR 7538
TRB1-B-205/485/117	205	485	116.75	95.2	68	116	161	85.9	A	USSR 7841
TRB1-B-220/340/76	220	340	76	72	59	92	162	22.1	A	USSR 2007144
TRB1-B-240/320/51	240	320	51	48	41	40	78	9.23	A	USSR 2007948
TRB1-B-260/360/64	260	360	64	60	51	63	122	18.4	A	USSR 2007952
TRB1-B-260/540/110	260	540	110	102	80	185	259	108.8	A	USSR 7352*
TRB1-B-300/460/100	300	460	100	95	82	124	238	53.3	A	USSR 2007160
TRB1-B-420/620/95	420	620	95	90	67	154	290	86.8	A	USSR 7184
TRB1-B-520/740/95	520	740	95	86	70	156	330	118	A	USSR 77/520*
TRB1-B-600/870/124	600	870	124	118	88	308	623	232	A	USSR 71/600*
TRB1-B-710/950/114	710	950	114	106	80	258	610	290	A	USSR 10079/710*

TAPER ROLLER BEARINGS - DOUBLE ROW



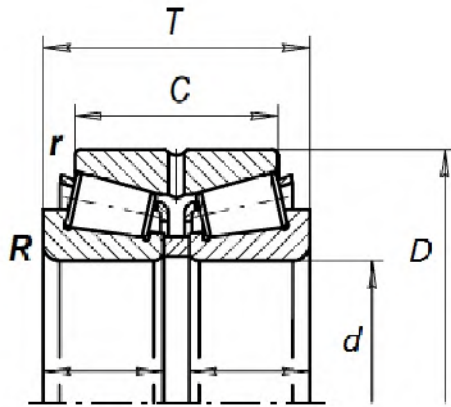
TYPE - A



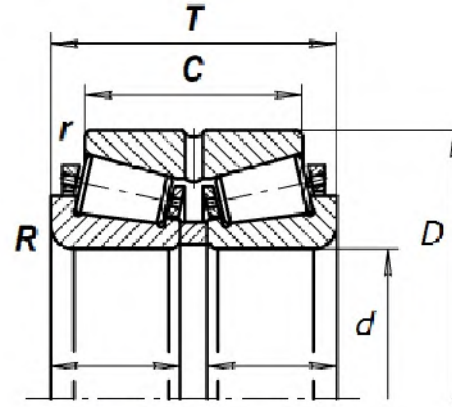
TYPE - A1

JMC No.	SIZE (mm)				LOAD RATINGS (TONS)		Wt. Kg.	Type	EQV. No.
	d	D	C	T	Dyn. C	Stat. Co.			
MRTRB2-B-50/90/45/55	50	90	45	55	15	20	1.4	A	USSR 97510
MRTRB2-B-60/110/55/65	60	110	55	65	22	33	2.49	A	USSR 97512
MRTRB2-B-70/125/62/75	70	125	62	75	21	31	3.5	A	USSR 97514
MRTRB2-B-75/130/62/75	75	130	62	75	27	42	3.8	A	USSR 97515
MRTRB2-B-90/160/78/95	90	160	78	95	25	34	7.4	A	USSR 97518
MRTRB2-B-100/180/92/112	100	180	92	112	50	86	10.9	A	USSR 97520
MRTRB2-B-105/190/96/118	105	190	96	118	57	99	13.75	A	USSR 97521
MRTRB2-B-120/200/90/110	120	200	90	110	50	95	11.7	A	USSR 2097724
MRTRB2-B-130/210/90/110	130	210	90	110	55	100	13.6	A	USSR 2097726
MRTRB2-B-130/230/120/150	130	230	120	150	90	170	25.4	A	USSR 97526
MRTRB2-B-150/250/112/138	150	250	112	138	75	145	25.8	A	USSR 2097730
MRB2-B-150/270/138/172	150	270	138	172	110	200	39.1	A	USSR 97530
MRTRB2-B-160/270/120/150	160	270	120	150	95	185	34.9	A	USSR 2097732
MRTRB2-B-180/250/76/95	180	250	76	95	50	110	13.2	A	USSR 2097936
MRTRB2-B-180/280/108/134	180	280	108	134	90	175	27.9	A	USSR 2097136
MRTRB2-B-180/300/134/164	180	300	134	164	110	225	43.2	A	USSR 2097736
MRTRB2-B-200/280/97/117	200	280	97	117	65	150	20.8	A	USSR 2097940
MRTRB2-B-200/310/123/152	200	310	123	152	105	220	39.2	A	USSR 2097140
MRTRB2-B-200/340/150/184	200	340	150	184	150	300	61.5	A	USSR 2097740
MRTRB2-B-220/300/88/110	220	300	88	110	73	170	21.4	A	USSR 2097944
MRTRB2-B-220/340/130/165	220	340	130	165	120	250	47.1	A	USSR 2097144
MRTRB2-B-220/370/166/199	220	370	166	199	170	330	76.2	A	USSR 2097744
MRTRB2-B-240/320/90/110	240	320	90	110	75	180	22	A	USSR 2097948
MRTRB2-B-240/360/130/165	240	360	130	165	130	285	52.9	A	USSR 2097148
MRTRB2-B-240/400/168/210	240	400	168	210	190	360	96.3	A	USSR 2097748
MRTRB2-B-260/360/109/133	260	360	109	133	100	240	38.3	A	USSR 2097952
MRTRB2-B-260/400/146/186	260	400	146	186	165	345	81.5	A	USSR 2097152
MRTRB2-B-260/440/180/225	260	440	180	225	235	430	126	A	USSR 2097752
MRTRB2-B-280/420/154/188	280	420	154	188	175	350	82.5	A	USSR 2097156

TAPER ROLLER BEARINGS - DOUBLE ROW



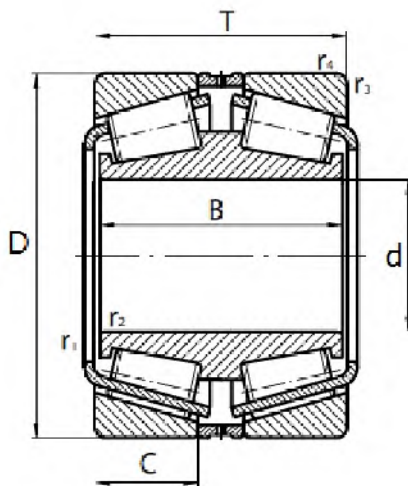
TYPE - A



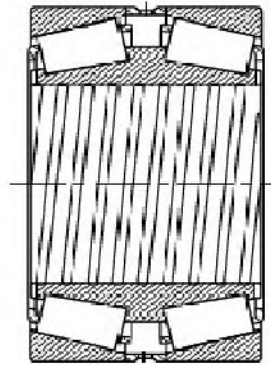
TYPE - A1

JMC No.	SIZE (mm)				LOAD RATINGS (TONS)		Wt. Kg.	Type	EQV. No.
	d	D	C	T	Dyn. C	Stat. Co.			
MRTRB2-B-300/420/128/160	300	420	128	160	125	140	62.4	A	USSR 2097960
MRTRB2-B-300/460/165/214	300	460	165	214	200	465	119	A	USSR 2097160
MRTRB2-B-300/500/125/180	300	500	125	180	205	400	132	A	USSR 97760
MRTRB2-B-340/460/128/160	340	460	128	160	150	380	71		USSR 2097968
MRTRB2-B-340/580/170/241	340	580	170	241	309	580	221.5	A	USSR 1097768
MRTRB2-B-360/480/128/159	360	480	128	159	157	406	74.4	A	USSR 2097972
MRTRB2-B-380/620/170/241	380	620	170	241	313	609	251	A	USSR 1097776
MRTRB2-B-400/600/150/245	400	600	150	205	260	565	179	A	USSR 97180
MRTRB2-B-420/620/150/205	420	620	150	205	265	380	187	A	USSR 97184
MRTRB2-B-420/700/200/275	420	700	200	275	455	930	400	A	USSR 1097784
MRTRB2-B-440/650/152/211	440	650	152	211	271	608	213	A	USSR 97188
MRTRB2-B-460/680/175/230	460	680	175	230	324	695	248	A	USSR 97192
MRTRB2-B-480/650/130/179	480	650	130	179	213	515	168	A	USSR 1097996
MRTRB2-B-530/710/136/190	530	710	136	190	265	654	193.5	A	USSR 10979/530*
MRTRB2-B-560/750/156/212	560	750	156	212	276	705	238	A	USSR 10979/560*
MRTRB2-B-600/800/160/209	600	800	160	209	344	918	283	A	USSR 10979/600*
MRTRB2-B-600/870/198/269	600	870	198	269	527	1245	497	A	USSR 971/600*
MRTRB2-B-710/950/175/239	710	950	175	239	442	1220	445	A	USSR 10979/710*
MRTRB2-B-100/180/67/83	100	180	67	83	45	68	8.2	A	NTN-430220XU
MRTRB2-B-177/247/103/84	177.80	247.65	84.138	103.18	65	105	13.7	A	TIMKEN 67791/ 67720DW
MRTRB2-B-228/355/152/114	228.6	355.6	152.4	114.3	110	260	52.8	A1	TIMKEN-HM746646/ HM746610CD (C29360) TDO
MRTRB2-B-200/340/105-PC	200	340	105.13	105.01	-	-	45	SPL	BSC-457503

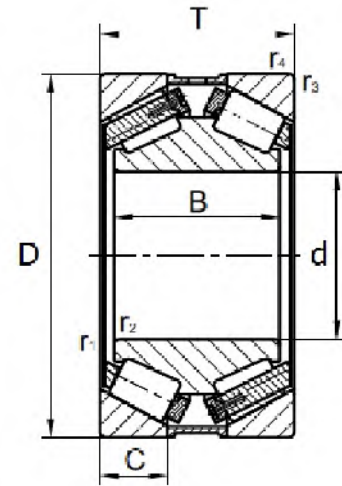
TAPER ROLLER BEARINGS - DOUBLE ROW



TYPE - B



TYPE - B1



TYPE - B2

JMC No.	SIZE (mm)					LOAD RATINGS (TONS)		Wt. Kg.	Type	EQV. No.
	d	D	T	B	C	Dyn. C	Stat. Co.			
MRTRB2-B-260/420/169/170	260	420	169	170	70	190	377	88.5	-	USSR 47752
MRTRB2-B-400/600/189/190	400	600	189	190	63	223	508	184	B2	USSR 847180
MRTRB2-B-500/720/217/185	500	720	217	185	75	235	532	260	B2	USSR 40471/500
MRTRB2-B-560/822/240/242	560	822	240	242	80	363	900	440	B2	USSR 8471/560

JMC No.	SIZE (mm)				LOAD RATINGS (TONS)		Wt. Kg.	Type	EQV. No.
	d	D	T	B	Dyn. C	Stat. Co.			
MRTRB2-B-177/288/123/123	177.8	288.925	123.825	123.825	115	200	31.6	B	TIMKEN-HM237546D/ HM237510, HM237510EA
MRTRB2-B-203/368/158/152	203.2	368.3	158.75	152.40	175	325	77.2	B1	TIMKEN-EE420800D/ EE421450, Y4S-421450 (FAG-541397)
MRTRB2-B-254/438/165/165	254	438.15	165.10	165.10	225	400	104.5	B1	TIMKEN-EE738101D/ EE738172, Y1S738172 (FAG-547757)

PRESSURE ROLLER UNITS (for Sintering Plant, Pelletising Plants)



JMC Pressure Roller Units are mainly developed for use in the continuous furnace of Sintering and Pelletising plants (Pallet Car). These ready to mount units are also suitable for all application where heavy loads are to be accommodated and the direction of rotation is frequently reversed.

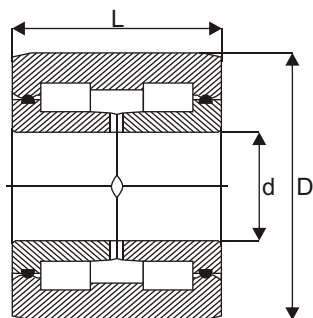
JMC Pressure Roller Units are basically double row full complement Cylindrical Roller Bearing. The very thick walled outer ring has three integral flanges. The highly wear - resistant outside diameter surface is cylindrical, being relieved towards the form of a chamfer.

The Inner ring is in two halves, each of which has an integral flange, which is designed to enable the units to carry heavy axial loads in addition to radials. Oil seals inserted between the Inner ring flanges and Outer ring groove prevent contamination from entering the bearing and lubricating grease from leaving out and make the bearing as one solid integral unit.

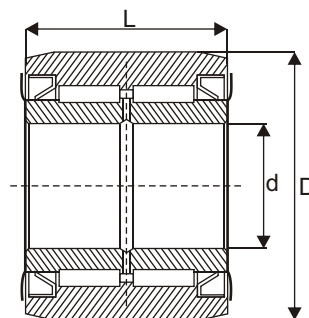
The Units are designed for maintenance free operation and should therefore not to be washed before mounting.

In Contrast to normal rolling bearing where the outer ring is supported over its whole circumference by the housing bore, load is applied to the Pressure Roller units Via a small contact area on the outer ring Cylindrical surface. Deformation of the Outer ring **values** for the maximum permissible radial, dynamic and the static bearing loads are given in the table. The permissible Static load which can be applied to a Pressure roller unit is obtained from the smaller of the two values for C and Co.

PRESSURE ROLLER UNITS (for Sintering Plant, Pelletising Plants)



TYPE - A



TYPE - B

JMC BEARING NO.	SIZE (mm)			LOAD RATING IN TONS		Wt. Kg.	TYPE	EQV. No.
	d	D	L	Dyn. C	Static Co			
PRU-B-93/170/95	93	170	95	40	62	10	A	SKF-319201/HB2
PRU-B-100/200/114	100	200	114	58	95	18	A	SKF-BC2B326571/HB2
PRU-B-110/210/110	110	210	110	40	60	20	A	SKF-319008A/HB2
PRU-B-120/210/114	120	210	114	53	89	19	A	SKF-319181/HB2
PRU-B-130/210/132	130	210	132	50	155	20	B	NTN-E-SLX130/210/ 132ZZPx1/L226
PRU-B-140/250/114	140	250	114	81	140	25	A	SKF-316977C
PRU-B-140/280/114	140	280	114	90	145	34	A	SKF-BC2B320055/HB1
PRU-B-160/320/120	160	320	120	113	201	46	A	SKF-BC2B319618
PRU-B-180/330/125	180	330	125	95	190	48	A	SKF-319105

UNIVERSAL JOINT JOURNAL CROSS ASSEMBLIES AND CROSS BEARINGS



JMC CROSS Bearings are Cylindrical Roller Bearings with forged one piece bush, mainly used for heavy duty applications in steel plants and rolling mills.

Oil sealing is properly done to avoid the lubricant losses and also to avoid the penetration of water or impurities, inside the Bearings.

JMC UJ Cross Bearings can work :

Under proper load with safety operations.
Long rating life with free workmanship.
Smooth running without vibration.

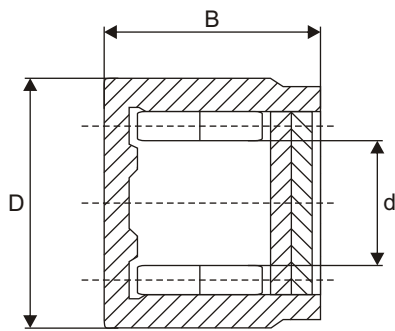
JMC Journal Cross Assemblies can be supplied with Lubrication Systems :

- 1) Central Lubrication
- 2) Bush Lubrication (4 Point Lubrication)

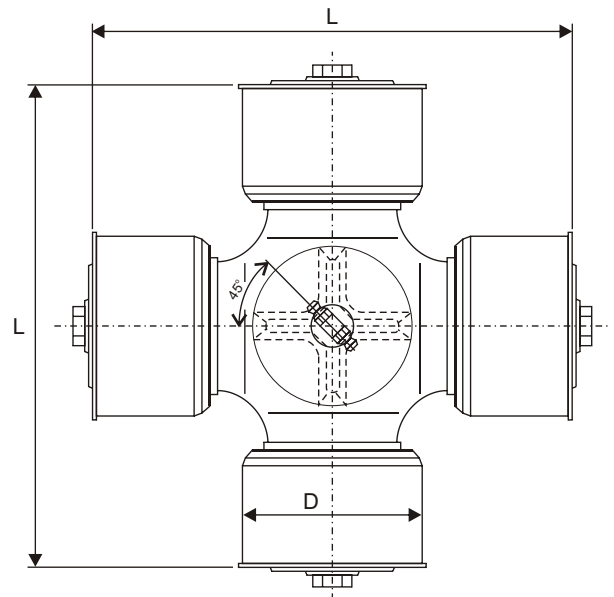
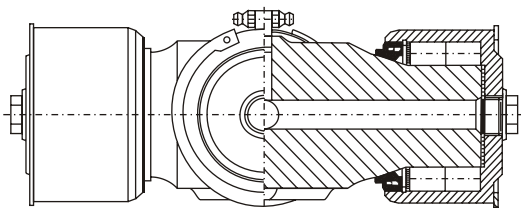
JMC Journal Cross Assemblies & Cross Bearings are lubricated with Lithium base Grease for ready to use.

- * Apart from sizes mentioned in this catalogue we can manufacture Complete Journal Cross Assemblies and Cross Bearings as per customer requirements.
- * Also we can refurbish the cross and make suitable bearings for the same.
- * We may require one sample for development of new sizes.

UNIVERSAL JOINT JOURNAL CROSS ASSEMBLIES AND CROSS BEARINGS



UCB



UJCA

JMC REFERENCE NOS.		SIZE (mm)			
BEARING NO.	UJ CROSS ASSEMBLY NO.	d	D	B	L
UCB-B-49/83/56	UJCA-A-CLU-83-224	49	83	56	224
UCB-B-66/102/62	UJCA-A-CLU-102-215	66.5	102	62	215
UCB-B-57/95/70	UJCA-A-CLU-95-220	57.15	95	69.5	220
UCB-B-50/83/72		50	83	72	
UCB-B-50/71/45		50	71.4	45	
UCB-B-51/83/60		51.3	83	60	
UCB-B-51/83/68		51.3	83	68	
UCB-B-60/95/105		60.5	95	105	
UCB-B-65/85/43		65.2	85	43.5	
UCB-B-99/145/96		99	145	96	
UCB-B-105/145/172		105	145	172	
UCB-B-114/177/76		114.30	177.80	76	
UCB-B-158/215/136		158	215	136	
UCB-B-173/250/151		173	250	151.75	
UCB-B-173/250/151		173	250	151.75 / 91.96	
UCB-B-184/287/130		184.15	287	130	
UCB-B-229.5/302-343/215		229.5	302/343	215	

CLU = Central Lubrication

Enquiries are solicited for :-

- 1) The Complete Journal Cross Assemblies.
- 2) The Cross Bearings as per customer requirement.
- 3) Refurbishing of worn out Cross Assembly with Bearings.

PRODUCT RANGE



ROLLER CAGE BEARINGS, WITHOUT INNER & OUTER RACE



CYLINDRICAL ROLLER BEARINGS



FLEXIBLE ROLLER BEARINGS



SPIRAL (FLEXIBLE) BUSH BEARINGS for CCM



SUPPORT ROLLERS Back-up Roll Bearings for 20-HI Sendzmir CRM



CYLINDRICAL ROLLER BEARINGS



CYLINDRICAL ROLLER BEARINGS - SINGLE ROW



MULTI ROW CYLINDRICAL ROLLER BEARINGS - DOUBLE ROW



MULTI ROW CYLINDRICAL ROLLER BEARINGS - FOUR ROW



SPLIT ROLLER BEARINGS



TAPER ROLLER BEARINGS



PRESSURE ROLLER UNITS



UNIVERSAL JOINT JOURNAL CROSS ASSEMBLIES & CROSS BEARINGS

Shankar Panwal | Manager Marketing

Mobile: +91 7666695283 |

Tel.(DID): +91 22 40642128 / 40642148 |

Email: s.panwal@jmangsun.com |



J. MANGSUN & CO.

Plot No. A-483, Road No. 24, Wagle Industrial Estate,
Thane - 400 604 (Mumbai), State - Maharashtra, INDIA.
Tel. : 0091-22-4064 2100 - 2119 / 4064 2127 / 4064 2128
Fax : 0091-22-2582 3867

Website : www.jmangsun.com
E-mail : marketing@jmangsun.com